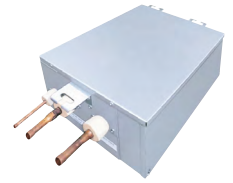


VRF SHRMe R410a: Single flow selector boxes (4 series):

Flow Selector Boxes: The Toshiba FS Box is the smallest and lightest heat recovery box on the market, offering exceptional performance and easy maintenance in a compact and quiet design.



Hi - Res Image



Flow Selector Unit (Series 4)	RBM-	Y1124FE	Y1804FE	Y2804FE
Height x Width x Depth	mm	180 x 425 x 300	180 x 425 x 300	180 x 495 x 350
Weight	kg	11	11	16
Standard 5 Core Control Cable Max. Length	m	-	-	-
Standard 3 Core Power Cable Max. Length	m	-	-	-
Optional Accessory Combined Control/Power Cable Max. Length	m	-	-	-
Power Supply From Local or Group Indoor Unit	V/ph/Hz	220-240/1/50	220-240/1/50	220-240/1/50

Single Unit Connection For Flow Selector		005 to 012	015 to 018	024 to 030	036 to 056	072 to 096
MM*-UP***						
Indoor Unit Side Gas Pipe	inch	3/8	1/2	5/8	5/8	7/8
Indoor Unit Side Liquid Pipe	inch	1/4	1/4	3/8	3/8	1/2
Outdoor Unit Side Suction Gas Pipe	inch	5/8	5/8	5/8	5/8	7/8
Outdoor Unit Side Discharge Gas Pipe	inch	1/2	1/2	1/2	1/2	3/4
Outdoor Unit Side Liquid Pipe	inch	3/8	3/8	3/8	3/8	1/2
Max. Pipe Length To Indoor Unit	m	50	50	50	50	50

Multi Unit Connection For Flow Selector		Less than 4 hp	4 hp or more Less than 6.4 hp	6.4 hp or more Less than 10 hp
Indoor unit capacity code				
Indoor Unit Side Gas Pipe	inch	5/8	5/8	7/8
Indoor Unit Side Liquid Pipe	inch	3/8	3/8	1/2
Outdoor Unit Side Suction Gas Pipe	inch	5/8	5/8	7/8
Outdoor Unit Side Discharge Gas Pipe	inch	1/2	1/2	3/4
Outdoor Unit Side Liquid Pipe	inch	3/8	3/8	1/2
Max. Connectable Indoor Units		6	10	16
Max. Total Pipe Length	m	50	50	50
Max. Height Difference Between Indoor Units	m	±3.0	±3.0	±3.0

*All [Accessories](#) / [Controls](#)

Related items - Y1124FE:

- [Full specification](#)
- [BIM files](#)
- [CAD files](#)
- [Dimensional drawing](#)
- [Wiring diagram](#)
- [Installation manual](#)



Related items - Y1804FE:

- [Full specification](#)
- [BIM files](#)
- [CAD files](#)
- [Dimensional drawing](#)
- [Wiring diagram](#)
- [Installation manual](#)



Related items - Y2804FE:

- [Full specification](#)
- [BIM files](#)
- [CAD files](#)
- [Dimensional drawing](#)
- [Wiring diagram](#)
- [Installation manual](#)

