



Turn to the experts

Carrier VRF Retail Price List 2024

Effective from 1st May 2024 - GBP Edition





Turn to the experts

Contents

| | |
|---|---------|
| XCT-7 Mini VRF Outdoor Units | 1 - 3 |
| XCT-7 VRF Outdoor Units | 4 - 22 |
| VRF Heat Recovery Valve Boxes | 23 - 24 |
| VRF DX Kits | 25 - 43 |
| VRF Indoor Units | 44 - 59 |
| Accessories | 60 - 63 |
| Contact Us | 65 |



Turn to the experts



Mini XCT7 - VRF 2-Pipe Heat Pump Outdoor Unit 1ph

| | | | | | | |
|---------------------------|--|----------------|----------------|----------------|----------------|----------------|
| Outdoor Unit | | 38VS125C7SHQEE | 38VS140C7SHQEE | 38VS12117SHQEE | 38VS14017SHQEE | 38VS15517SHQEE |
| Outdoor Unit Retail Price | | £3,137 | £3,315 | £3,632 | £4,101 | £4,407 |

| | | | | | | |
|--|-----------|---------------------------|---------------------------|---------------------------|---------------------------|---------------------------|
| Rated Cooling capacity | kW | 12.1 | 14.0 | 12.1 | 14.0 | 15.5 |
| Rated Heating capacity | kW | 14.0 | 15.5 | 14.2 | 16.0 | 18.0 |
| SEER - SCOP - Energy Label | kW/kW | 4.90 - 3.50 - 193.0/137.0 | 4.85 - 3.55 - 191.0/139.0 | 6.82 - 4.05 - 269.8/159.0 | 6.65 - 4.11 - 263.0/161.4 | 6.80 - 4.05 - 269.0/159.0 |
| Sound Pressure Level | dB(A) | 60 | 62 | 57 | 58 | 59 |
| Dimensions(HxWxD) | mm | 950x965x370 | 950x965x370 | 1340x950x370 | 1340x950x370 | 1340x950x370 |
| Weight | kg | 90 | 90 | 108 | 108 | 108 |
| Suggested Power supply OD | V-ph-Hz-A | 220/240-1-50 - 32 | 220/240-1-50 - 32 | 220/240-1-50 - 32 | 220/240-1-50 - 32 | 220/240-1-50 - 32 |
| Pipe connections (Gas - Liquid) | inch | 5/8 - 3/8 | 5/8 - 3/8 | 5/8 - 3/8 | 5/8 - 3/8 | 5/8 - 3/8 |
| Max pipe length - Maximum lift above/below | m | 70 - 30/20 | 70 - 30/20 | 150 - 50/40 | 150 - 50/40 | 150 - 50/40 |
| Refrigerant charge R410a | kg | 3.3 | 3.3 | 4.0 | 4.0 | 4.0 |



MINI XCT7



Turn to the experts



Mini XCT7 - VRF 2-Pipe Heat Pump Outdoor Unit 3ph

| Outdoor Unit | | 38VS121173HQEE | 38VS140173HQEE | 38VS155173HQEE |
|---------------------------|--|----------------|----------------|----------------|
| Outdoor Unit Retail Price | | £3,703 | £4,203 | £4,437 |

| | | | | |
|--|-----------|---------------------------|---------------------------|---------------------------|
| Rated Cooling capacity | kW | 12.1 | 14.0 | 15.5 |
| Rated Heating capacity | kW | 14.2 | 16.0 | 18.0 |
| SEER - SCOP - Energy Label | kW/kW | 6.82 - 4.05 - 269.8/159.0 | 6.65 - 4.11 - 263.0/161.4 | 6.80 - 4.05 - 269.0/159.0 |
| Sound Pressure Level | dB(A) | 57 | 58 | 59 |
| Dimensions(HxWxD) | mm | 1340x950x370 | 1340x950x370 | 1340x950x370 |
| Weight | kg | 108 | 108 | 108 |
| Suggested Power supply OD | V-ph-Hz-A | 380/415-3-50 - 20 | 380/415-3-50 - 20 | 380/415-3-50 - 20 |
| Pipe connections (Gas - Liquid) | inch | 5/8 - 3/8 | 5/8 - 3/8 | 5/8 - 3/8 |
| Max pipe length - Maximum lift above/below | m | 150 - 50/40 | 150 - 50/40 | 150 - 50/40 |
| Refrigerant charge R410a | kg | 4.0 | 4.0 | 4.0 |



Turn to the experts



Mini XCT7 - VRF 2-Pipe Heat Pump Outdoor Unit 3ph (Continued)

| Outdoor Unit | | 38VS226174HQEE | 38VS280174HQEE | 38VS335174HQEE |
|--|-----------|---------------------------|---------------------------|---------------------------|
| Outdoor Unit Retail Price | | £5,508 | £5,702 | £5,998 |
| Rated Cooling capacity | kW | 22.6 | 28.0 | 31.5 |
| Rated Heating capacity | kW | 25.0 | 32.0 | 35.0 |
| SEER - SCOP - Energy Label | kW/kW | 7.67 - 4.05 - 303.8/159.0 | 7.65 - 4.16 - 303.0/163.4 | 7.47 - 4.21 - 295.8/165.4 |
| Sound Pressure Level | dB(A) | 65 | 66 | 67 |
| Dimensions(HxWxD) | mm | 1636x1050x400 | 1636x1050x400 | 1636x1050x400 |
| Weight | kg | 149 | 149 | 149 |
| Suggested Power supply OD | V-ph-Hz-A | 380/415-3-50 - 40 | 380/415-3-50 - 40 | 380/415-3-50 - 40 |
| Pipe connections (Gas - Liquid) | inch | 3/4 - 3/8 | 7/8 - 3/8 | 1 1/8 - 1/2 |
| Max pipe length - Maximum lift above/below | m | 150 - 50/40 | 150 - 50/40 | 150 - 50/40 |
| Refrigerant charge R410a | kg | 5.1 | 5.1 | 5.1 |



Turn to the experts



XCT7 - VRF 2-Pipe Heat Pump Outdoor Unit

| Outdoor Unit | | 38VT008173HQEE | 38VT010173HQEE | 38VT012173HQEE | 38VT014173HQEE | 38VT016173HQEE |
|---------------------------|--|----------------|----------------|----------------|----------------|----------------|
| Outdoor Unit Retail Price | | £6,885 | £7,355 | £8,742 | £9,629 | £10,812 |

| | | | | | | |
|--|-----------|---------------------------|---------------------------|---------------------------|---------------------------|---------------------------|
| Rated Cooling capacity | kW | 25.2 | 28.0 | 33.5 | 40.0 | 45.0 |
| Rated Heating capacity | kW | 28.0 | 31.5 | 37.5 | 45.0 | 50.0 |
| SEER - SCOP - Energy Label | kW/kW | 7.25 - 4.41 - 287.0/173.4 | 7.09 - 4.31 - 280.6/169.4 | 6.69 - 4.31 - 264.6/169.4 | 6.60 - 4.12 - 261.0/161.8 | 6.36 - 4.05 - 251.4/159.0 |
| Sound Pressure Level | dB(A) | 56 | 56 | 59 | 59 | 60 |
| Dimensions(HxWxD) | mm | 1690x980x750 | 1690x980x750 | 1690x980x750 | 1690x980x750 | 1690x980x750 |
| Weight | kg | 224 | 224 | 224 | 244 | 244 |
| Suggested Power supply OD | V-ph-Hz-A | 380/415-3-50 - 25 | 380/415-3-50 - 25 | 380/415-3-50 - 32 | 380/415-3-50 - 40 | 380/415-3-50 - 40 |
| Pipe connections (Gas - Liquid) | inch | 3/4 - 3/8 | 7/8 - 3/8 | 1 1/8 - 1/2 | 1 1/8 - 1/2 | 1 1/8 - 1/2 |
| Max pipe length - Maximum lift above/below | m | 220 - 110/90 | 220 - 110/90 | 220 - 110/90 | 220 - 110/90 | 220 - 110/90 |
| Refrigerant charge R410a | kg | 8.5 | 8.5 | 8.5 | 10.0 | 10.0 |



Turn to the experts



XCT7 - VRF 2-Pipe Heat Pump Outdoor Unit (Continued)

| Outdoor Unit | | 38VT018173HQEE | 38VT020173HQEE | 38VT022173HQEE | 38VT024173HQEE | 38VT026173HQEE |
|---------------------------|--|----------------|----------------|----------------|----------------|----------------|
| Outdoor Unit Retail Price | | £11,812 | £12,608 | £13,413 | £14,270 | £16,290 |

| | | | | | | |
|--|-----------|---------------------------|--------------------------|---------------------------|---------------------------|--------------------------|
| Rated Cooling capacity | kW | 50.4 | 56.0 | 61.5 | 68.0 | 73.5 |
| Rated Heating capacity | kW | 56.5 | 61.5 | 69.0 | 73.0 | 82.5 |
| SEER - SCOP - Energy Label | kW/kW | 6.78 - 4.15 - 268.2/163.0 | 6.75 - 4.2 - 267.0/165.0 | 6.54 - 4.21 - 258.6/165.4 | 5.83 - 4.17 - 230.2/163.8 | 4.90 - 3.5 - 193.0/137.0 |
| Sound Pressure Level | dB(A) | 61 | 61 | 61 | 62 | 62 |
| Dimensions(HxWxD) | mm | 1690x1410x750 | 1690x1410x750 | 1690x1410x750 | 1690x1410x750 | 1690x1410x750 |
| Weight | kg | 287 | 370 | 370 | 370 | 370 |
| Suggested Power supply OD | V-ph-Hz-A | 380/415-3-50 - 50 | 380/415-3-50 - 63 | 380/415-3-50 - 63 | 380/415-3-50 - 63 | 380/415-3-50 - 63 |
| Pipe connections (Gas - Liquid) | inch | 1 1/8 - 5/8 | 1 1/8 - 5/8 | 1 1/8 - 5/8 | 1 1/8 - 5/8 | 1 1/8 - 5/8 |
| Max pipe length - Maximum lift above/below | m | 220 - 110/90 | 220 - 110/90 | 220 - 110/90 | 220 - 110/90 | 220 - 110/90 |
| Refrigerant charge R410a | kg | 10.0 | 10.0 | 10.0 | 10.0 | 10.0 |

XCT-7

XCT7



Turn to the experts



XCT7 - VRF 2-Pipe Heat Pump Outdoor Unit

| Outdoor Unit | | 38VT028S73HQEE | 38VT030S73HQEE | 38VT032S73HQEE | 38VT034S73HQEE | 38VT036S73HQEE | 38VT038S73HQEE |
|--|-----------|--------------------------|---------------------------|---------------------------|---------------------------|---------------------------|---------------------------|
| Outdoor 1 | | 38VT014173HQEE | 38VT014173HQEE | 38VT016173HQEE | 38VT016173HQEE | 38VT018173HQEE | 38VT018173HQEE |
| Outdoor 2 | | 38VT014173HQEE | 38VT016173HQEE | 38VT016173HQEE | 38VT018173HQEE | 38VT018173HQEE | 38VT020173HQEE |
| System Retail Price | | £19,258 | £20,441 | £21,624 | £22,624 | £23,624 | £24,420 |
| Rated Cooling capacity | kW | 80.0 | 85.0 | 90.0 | 95.4 | 100.8 | 106.4 |
| Rated Heating capacity | kW | 90.0 | 95.0 | 100.0 | 106.5 | 113.0 | 118.0 |
| SEER - SCOP - Energy Label | kW/kW | 6.6 - 4.12 - 261.0/161.8 | 6.36 - 4.05 - 251.4/159.0 | 6.36 - 4.05 - 251.4/159.0 | 6.36 - 4.05 - 251.4/159.0 | 6.78 - 4.15 - 268.2/163.0 | 6.75 - 4.15 - 267.0/163.0 |
| Sound Pressure Level | dB(A) | 62 | 63 | 63 | 64 | 64 | 64 |
| Dimensions(HxWxD) | mm | 1690x1360x750 | 1690x1360x750 | 1690x1360x750 | 1690x2390x750 | 1690x2820x750 | 1690x2820x750 |
| Weight | kg | 224+224 | 224+224 | 224+224 | 244+287 | 287+287 | 287+370 |
| Suggested Power supply OD | V-ph-Hz-A | 380/415-3-50 - 40+40 | 380/415-3-50 - 40+40 | 380/415-3-50 - 40+40 | 380/415-3-50 - 40+50 | 380/415-3-50 - 50+50 | 380/415-3-50 - 50+63 |
| Pipe connections (Gas - Liquid) | inch | 1 1/8 - 5/8 | 1 3/8 - 3/4 | 1 3/8 - 3/4 | 1 3/8 - 3/4 | 1 5/8 - 3/4 | 1 5/8 - 3/4 |
| Max pipe length - Maximum lift above/below | m | 220 - 110/90 | | 220 - 110/90 | 220 - 110/90 | 220 - 110/90 | 220 - 110/90 |
| Refrigerant charge R410a | kg | 10+10 | 10+10 | 10+10 | 10+10 | 10+10 | 10+10 |



Turn to the experts



XCT7 - VRF 2-Pipe Heat Pump Outdoor Unit (Continued)

| Outdoor Unit | | 38VT040S73HQEE | 38VT042S73HQEE | 38VT044S73HQEE | 38VT046S73HQEE | 38VT048S73HQEE | 38VT050S73HQEE |
|----------------------------|--|-----------------------|-----------------------|-----------------------|-----------------------|-----------------------|-----------------------|
| Outdoor 1 | | 38VT020173HQEE | 38VT020173HQEE | 38VT022173HQEE | 38VT022173HQEE | 38VT024173HQEE | 38VT024173HQEE |
| Outdoor 2 | | 38VT020173HQEE | 38VT022173HQEE | 38VT022173HQEE | 38VT024173HQEE | 38VT024173HQEE | 38VT026173HQEE |
| System Retail Price | | £25,216 | £26,021 | £26,826 | £27,683 | £28,540 | £30,560 |

| | | | | | | | |
|--|-----------|---------------------------|---------------------------|---------------------------|---------------------------|---------------------------|---------------------------|
| Rated Cooling capacity | kW | 112.0 | 117.5 | 123.0 | 129.5 | 136.0 | 141.5 |
| Rated Heating capacity | kW | 123.0 | 130.5 | 138.0 | 142.0 | 146.0 | 155.5 |
| SEER - SCOP - Energy Label | kW/kW | 6.75 - 4.20 - 267.0/165.0 | 6.54 - 4.20 - 258.6/165.0 | 6.54 - 4.21 - 258.6/165.4 | 5.83 - 4.17 - 230.2/163.8 | 5.83 - 4.17 - 230.2/163.8 | 4.90 - 3.48 - 193.0/136.2 |
| Sound Pressure Level | dB(A) | 64 | 64 | 64 | 65 | 65 | 65 |
| Dimensions(HxWxD) | mm | 1690x2820x750 | 1690x2820x750 | 1690x2820x750 | 1690x2820x750 | 1690x2820x750 | 1690x2820x750 |
| Weight | kg | 370+370 | 370+370 | 370+370 | 370+370 | 370+370 | 370+370 |
| Suggested Power supply OD | V-ph-Hz-A | 380/415-3-50 - 63+63 | 380/415-3-50 - 63+63 | 380/415-3-50 - 63+63 | 380/415-3-50 - 63+63 | 380/415-3-50 - 63+63 | 380/415-3-50 - 63+63 |
| Pipe connections (Gas - Liquid) | inch | 1 5/8 - 3/4 | 1 5/8 - 3/4 | 1 5/8 - 3/4 | 1 5/8 - 3/4 | 1 5/8 - 3/4 | 1 5/8 - 3/4 |
| Max pipe length - Maximum lift above/below | m | 220 - 110/90 | 220 - 110/90 | 220 - 110/90 | 220 - 110/90 | 220 - 110/90 | 220 - 110/90 |
| Refrigerant charge R410a | kg | 10+10 | 10+10 | 10+10 | 10+10 | 10+10 | 10+10 |





Turn to the experts



XCT7 - VRF 2-Pipe Heat Pump Outdoor Unit (Continued)

| Outdoor Unit | | 38VT052S73HQEE | 38VT054S73HQEE | 38VT056S73HQEE | 38VT058S73HQEE | 38VT060S73HQEE |
|----------------------------|--|-----------------------|-----------------------|-----------------------|-----------------------|-----------------------|
| Outdoor 1 | | 38VT026173HQEE | 38VT018173HQEE | 38VT018173HQEE | 38VT018173HQEE | 38VT020173HQEE |
| Outdoor 2 | | 38VT026173HQEE | 38VT018173HQEE | 38VT018173HQEE | 38VT020173HQEE | 38VT020173HQEE |
| Outdoor 3 | | - | 38VT018173HQEE | 38VT020173HQEE | 38VT020173HQEE | 38VT020173HQEE |
| System Retail Price | | £32,580 | £35,436 | £36,232 | £37,028 | £37,824 |

| | | | | | | |
|--|-----------|---------------------------|---------------------------|---------------------------|---------------------------|---------------------------|
| Rated Cooling capacity | kW | 147.0 | 151.2 | 156.8 | 162.4 | 168.0 |
| Rated Heating capacity | kW | 165.0 | 169.5 | 174.5 | 179.5 | 184.5 |
| SEER - SCOP - Energy Label | kW/kW | 4.90 - 3.48 - 193.0/136.2 | 6.78 - 4.15 - 268.2/163.0 | 6.75 - 4.15 - 267.0/163.0 | 6.75 - 4.15 - 267.0/163.0 | 6.75 - 4.20 - 267.0/165.0 |
| Sound Pressure Level | dB(A) | 65 | 66 | 66 | 66 | 66 |
| Dimensions(HxWxD) | mm | 1690x2820x750 | 1690x4230x750 | 1690x4230x750 | 1690x4230x750 | 1690x4230x750 |
| Weight | kg | 370+370 | 287+287+287 | 287+287+370 | 287+370+370 | 370+370+370 |
| Suggested Power supply OD | V-ph-Hz-A | 380/415-3-50 - 63+63 | 380/415-3-50 - 50+50+50 | 380/415-3-50 - 50+50+63 | 380/415-3-50 - 50+63+63 | 380/415-3-50 - 63+63+63 |
| Pipe connections (Gas - Liquid) | inch | 1 5/8 - 3/4 | 1 5/8 - 3/4 | 1 5/8 - 3/4 | 1 5/8 - 3/4 | 1 5/8 - 3/4 |
| Max pipe length - Maximum lift above/below | m | 220 - 110/90 | 220 - 110/90 | 220 - 110/90 | 220 - 110/90 | 220 - 110/90 |
| Refrigerant charge R410a | kg | 10+10 | 10+10+10 | 10+10+10 | 10+10+10 | 10+10+10 |



Turn to the experts



XCT7 - VRF 2-Pipe Heat Pump Outdoor Unit (Continued)

| Outdoor Unit | | 38VT062S73HQEE | 38VT064S73HQEE | 38VT066S73HQEE | 38VT068S73HQEE | 38VT070S73HQEE |
|--|-----------|---------------------------|---------------------------|---------------------------|---------------------------|---------------------------|
| Outdoor 1 | | 38VT022173HQEE | 38VT022173HQEE | 38VT022173HQEE | 38VT022173HQEE | 38VT022173HQEE |
| Outdoor 2 | | 38VT020173HQEE | 38VT022173HQEE | 38VT022173HQEE | 38VT022173HQEE | 38VT024173HQEE |
| Outdoor 3 | | 38VT020173HQEE | 38VT020173HQEE | 38VT022173HQEE | 38VT024173HQEE | 38VT024173HQEE |
| System Retail Price | | £38,629 | £39,434 | £40,239 | £41,096 | £41,953 |
| Rated Cooling capacity | kW | 173.5 | 179.0 | 184.5 | 191.0 | 197.5 |
| Rated Heating capacity | kW | 192.0 | 199.5 | 207.0 | 211.0 | 215.0 |
| SEER - SCOP - Energy Label | kW/kW | 6.54 - 4.20 - 258.6/165.0 | 6.54 - 4.20 - 258.6/165.0 | 6.54 - 4.21 - 258.6/165.4 | 5.83 - 4.17 - 230.2/163.8 | 5.83 - 4.17 - 230.2/163.8 |
| Sound Pressure Level | dB(A) | 66 | 66 | 66 | 66 | 66 |
| Dimensions(HxWxD) | mm | 1690x4230x750 | 1690x4230x750 | 1690x4230x750 | 1690x4230x750 | 1690x4230x750 |
| Weight | kg | 370+370+370 | 370+370+370 | 370+370+370 | 370+370+370 | 370+370+370 |
| Suggested Power supply OD | V-ph-Hz-A | 380/415-3-50 - 63+63+63 | 380/415-3-50 - 63+63+63 | 380/415-3-50 - 63+63+63 | 380/415-3-50 - 63+63+63 | 380/415-3-50 - 63+63+63 |
| Pipe connections (Gas - Liquid) | inch | 1 5/8 - 3/4 | 1 5/8 - 3/4 | 1 5/8 - 3/4 | 1 5/8 - 7/8 | 1 5/8 - 7/8 |
| Max pipe length - Maximum lift above/below | m | 220 - 110/90 | 220 - 110/90 | 220 - 110/90 | 220 - 110/90 | 220 - 110/90 |
| Refrigerant charge R410a | kg | 10+10+10 | 10+10+10 | 10+10+10 | 10+10+10 | 10+10+10 |





Turn to the experts



XCT7 - VRF 2-Pipe Heat Pump Outdoor Unit (Continued)

| Outdoor Unit | | 38VT072S73HQEE | 38VT074S73HQEE | 38VT076S73HQEE | 38VT078S73HQEE | 38VT080S73HQEE |
|--|-----------|---------------------------|---------------------------|---------------------------|---------------------------|----------------------------|
| Outdoor 1 | | 38VT024173HQEE | 38VT026173HQEE | 38VT026173HQEE | 38VT026173HQEE | 38VT020173HQEE |
| Outdoor 2 | | 38VT024173HQEE | 38VT024173HQEE | 38VT026173HQEE | 38VT026173HQEE | 38VT020173HQEE |
| Outdoor 3 | | 38VT024173HQEE | 38VT024173HQEE | 38VT024173HQEE | 38VT026173HQEE | 38VT020173HQEE |
| Outdoor 4 | | - | - | - | - | 38VT020173HQEE |
| System Retail Price | | £42,810 | £44,830 | £46,850 | £48,870 | £50,432 |
| Rated Cooling capacity | kW | 204.0 | 209.5 | 215.0 | 220.5 | 224.0 |
| Rated Heating capacity | kW | 219.0 | 228.5 | 238.0 | 247.5 | 246.0 |
| SEER - SCOP - Energy Label | kW/kW | 5.83 - 4.17 - 230.2/163.8 | 4.90 - 3.48 - 193.0/136.2 | 4.90 - 3.48 - 193.0/136.2 | 4.90 - 3.48 - 193.0/136.2 | 6.75 - 4.20 - 267.0/165.0 |
| Sound Pressure Level | dB(A) | 67 | 67 | 67 | 67 | 67 |
| Dimensions(HxWxD) | mm | 1690x4230x750 | 1690x4230x750 | 1690x4230x750 | 1690x4230x750 | 1690x5640x750 |
| Weight | kg | 370+370+370 | 370+370+370 | 370+370+370 | 370+370+370 | 370+370+370+370 |
| Suggested Power supply OD | V-ph-Hz-A | 380/415-3-50 - 63+63+63 | 380/415-3-50 - 63+63+63 | 380/415-3-50 - 63+63+63 | 380/415-3-50 - 63+63+63 | 380/415-3-50 - 63+63+63+63 |
| Pipe connections (Gas - Liquid) | inch | 1 5/8 - 7/8 | 1 5/8 - 7/8 | 1 5/8 - 7/8 | 1 5/8 - 7/8 | 1 5/8 - 7/8 |
| Max pipe length - Maximum lift above/below | m | 220 - 110/90 | 220 - 110/90 | 220 - 110/90 | 220 - 110/90 | 220 - 110/90 |
| Refrigerant charge R410a | kg | 10+10+10 | 10+10+10 | 10+10+10 | 10+10+10 | 10+10+10+10 |



Turn to the experts



XCT7 - VRF 2-Pipe Heat Pump Outdoor Unit (Continued)

| Outdoor Unit | | 38VT082S73HQEE | 38VT084S73HQEE | 38VT086S73HQEE | 38VT088S73HQEE |
|--|-----------|----------------------------|----------------------------|----------------------------|----------------------------|
| Outdoor 1 | | 38VT020173HQEE | 38VT020173HQEE | 38VT020173HQEE | 38VT022173HQEE |
| Outdoor 2 | | 38VT020173HQEE | 38VT020173HQEE | 38VT022173HQEE | 38VT022173HQEE |
| Outdoor 3 | | 38VT020173HQEE | 38VT022173HQEE | 38VT022173HQEE | 38VT022173HQEE |
| Outdoor 4 | | 38VT022173HQEE | 38VT022173HQEE | 38VT022173HQEE | 38VT022173HQEE |
| System Retail Price | | £51,237 | £52,042 | £52,847 | £53,652 |
| Rated Cooling capacity | kW | 229.5 | 235.0 | 240.5 | 246.0 |
| Rated Heating capacity | kW | 253.5 | 261.0 | 268.5 | 276.0 |
| SEER - SCOP - Energy Label | kW/kW | 6.54 - 4.20 - 258.6/165.0 | 6.54 - 4.20 - 258.6/165.0 | 6.54 - 4.20 - 258.6/165.0 | 6.54 - 4.21 - 258.6/165.4 |
| Sound Pressure Level | dB(A) | 67 | 67 | 67 | 67 |
| Dimensions(HxWxD) | mm | 1690x5640x750 | 1690x5640x750 | 1690x5640x750 | 1690x5640x750 |
| Weight | kg | 370+370+370+370 | 370+370+370+370 | 370+370+370+370 | 370+370+370+370 |
| Suggested Power supply OD | V-ph-Hz-A | 380/415-3-50 - 63+63+63+63 | 380/415-3-50 - 63+63+63+63 | 380/415-3-50 - 63+63+63+63 | 380/415-3-50 - 63+63+63+63 |
| Pipe connections (Gas - Liquid) | inch | 1 5/8 - 7/8 | 1 5/8 - 7/8 | 2 1/8 - 1 1/8 | 2 1/8 - 1 1/8 |
| Max pipe length - Maximum lift above/below | m | 220 - 110/90 | 220 - 110/90 | 220 - 110/90 | 220 - 110/90 |
| Refrigerant charge R410a | kg | 10+10+10+10 | 10+10+10+10 | 10+10+10+10 | 10+10+10+10 |





Turn to the experts



XCT7 - VRF 2-Pipe Heat Pump Outdoor Unit (Continued)

| Outdoor Unit | | 38VT090S73HQEE | 38VT092S73HQEE | 38VT094S73HQEE | 38VT096S73HQEE |
|--|-----------|----------------------------|----------------------------|----------------------------|----------------------------|
| Outdoor 1 | | 38VT024173HQEE | 38VT024173HQEE | 38VT024173HQEE | 38VT024173HQEE |
| Outdoor 2 | | 38VT022173HQEE | 38VT024173HQEE | 38VT024173HQEE | 38VT024173HQEE |
| Outdoor 3 | | 38VT022173HQEE | 38VT022173HQEE | 38VT024173HQEE | 38VT024173HQEE |
| Outdoor 4 | | 38VT022173HQEE | 38VT022173HQEE | 38VT022173HQEE | 38VT024173HQEE |
| System Retail Price | | £54,509 | £55,366 | £56,223 | £57,080 |
| Rated Cooling capacity | kW | 252.5 | 259.0 | 265.5 | 272.0 |
| Rated Heating capacity | kW | 280.0 | 284.0 | 288.0 | 292.0 |
| SEER - SCOP - Energy Label | kW/kW | 5.83 - 4.17 - 230.2/163.8 | 5.83 - 4.17 - 230.2/163.8 | 5.83 - 4.17 - 230.2/163.8 | 5.83 - 4.17 - 230.2/163.8 |
| Sound Pressure Level | dB(A) | 67 | 68 | 68 | 68 |
| Dimensions(HxWxD) | mm | 1690x5640x750 | 1690x5640x750 | 1690x5640x750 | 1690x5640x750 |
| Weight | kg | 370+370+370+370 | 370+370+370+370 | 370+370+370+370 | 370+370+370+370 |
| Suggested Power supply OD | V-ph-Hz-A | 380/415-3-50 - 63+63+63+63 | 380/415-3-50 - 63+63+63+63 | 380/415-3-50 - 63+63+63+63 | 380/415-3-50 - 63+63+63+63 |
| Pipe connections (Gas - Liquid) | inch | 2 1/8 - 1 1/8 | 2 1/8 - 1 1/8 | 2 1/8 - 1 1/8 | 2 1/8 - 1 1/8 |
| Max pipe length - Maximum lift above/below | m | 220 - 110/90 | 220 - 110/90 | 220 - 110/90 | 220 - 110/90 |
| Refrigerant charge R410a | kg | 10+10+10+10 | 10+10+10+10 | 10+10+10+10 | 10+10+10+10 |



Turn to the experts



XCT7 - VRF 2-Pipe Heat Pump Outdoor Unit (Continued)

| Outdoor Unit | | 38VT098S73HQEE | 38VT100S73HQEE | 38VT102S73HQEE | 38VT104S73HQEE |
|----------------------------|--|----------------|----------------|----------------|----------------|
| Outdoor 1 | | 38VT026173HQEE | 38VT026173HQEE | 38VT026173HQEE | 38VT026173HQEE |
| Outdoor 2 | | 38VT024173HQEE | 38VT026173HQEE | 38VT026173HQEE | 38VT026173HQEE |
| Outdoor 3 | | 38VT024173HQEE | 38VT024173HQEE | 38VT026173HQEE | 38VT026173HQEE |
| Outdoor 4 | | 38VT024173HQEE | 38VT024173HQEE | 38VT024173HQEE | 38VT026173HQEE |
| System Retail Price | | £59,100 | £61,120 | £63,140 | £65,160 |

| | | | | | |
|--|-----------|----------------------------|----------------------------|----------------------------|----------------------------|
| Rated Cooling capacity | kW | 277.5 | 283.0 | 288.5 | 294.0 |
| Rated Heating capacity | kW | 301.5 | 311.0 | 320.5 | 330.0 |
| SEER - SCOP - Energy Label | kW/kW | 4.90 - 3.48 - 193.0/136.2 | 4.90 - 3.48 - 193.0/136.2 | 4.90 - 3.48 - 193.0/136.2 | 4.90 - 3.48 - 193.0/136.2 |
| Sound Pressure Level | dB(A) | 68 | 68 | 68 | 68 |
| Dimensions(HxWxD) | mm | 1690x5640x750 | 1690x5640x750 | 1690x5640x750 | 1690x5640x750 |
| Weight | kg | 370+370+370+370 | 370+370+370+370 | 370+370+370+370 | 370+370+370+370 |
| Suggested Power supply OD | V-ph-Hz-A | 380/415-3-50 - 63+63+63+63 | 380/415-3-50 - 63+63+63+63 | 380/415-3-50 - 63+63+63+63 | 380/415-3-50 - 63+63+63+63 |
| Pipe connections (Gas - Liquid) | inch | 2 1/8 - 1 1/8 | 2 1/8 - 1 1/8 | 2 1/8 - 1 1/8 | 2 1/8 - 1 1/8 |
| Max pipe length - Maximum lift above/below | m | 220 - 110/90 | 220 - 110/90 | 220 - 110/90 | 220 - 110/90 |
| Refrigerant charge R410a | kg | 10+10+10+10 | 10+10+10+10 | 10+10+10+10 | 10+10+10+10 |





Turn to the experts



XCT7 - VRF 3-Pipe Heat Recovery Outdoor Unit

| Outdoor Unit | | 38VT008173RQEE | 38VT010173RQEE | 38VT012173RQEE | 38VT014173RQEE |
|--|-----------|---------------------------|---------------------------|---------------------------|---------------------------|
| Outdoor Unit Retail Price | | £7,365 | £7,599 | £9,803 | £10,282 |
| Rated Cooling capacity | kW | 22.4 | 28.0 | 33.5 | 40.0 |
| Rated Heating capacity | kW | 25.0 | 31.5 | 37.5 | 45.0 |
| SEER - SCOP - Energy Label | kW/kW | 6.12 - 3.82 - 241.8/149.8 | 6.68 - 3.94 - 264.2/154.6 | 6.46 - 3.99 - 255.4/156.6 | 6.37 - 3.86 - 251.8/151.4 |
| Sound Pressure Level | dB(A) | 57 | 58 | 60 | 61 |
| Dimensions(HxWxD) | mm | 1690x980x750 | 1690x980x750 | 1690x980x750 | 1690x980x750 |
| Weight | kg | 246 | 246 | 257 | 257 |
| Suggested Power supply OD | V-ph-Hz-A | 380/415-3-50 - 25 | 380/415-3-50 - 25 | 380/415-3-50 - 32 | 380/415-3-50 - 40 |
| Pipe connections (Suction - Hot Gas - Liquid) | inch | 3/4 - 3/4 - 3/8 | 7/8 - 3/4 - 3/8 | 1 1/8 - 7/8 - 1/2 | 1 1/8 - 7/8 - 1/2 |
| Max pipe length - Maximum lift above/below | m | 220 - 110/90 | 220 - 110/90 | 220 - 110/90 | 220 - 110/90 |
| Refrigerant charge R410a | kg | 10.0 | 10.0 | 10.0 | 10.0 |



Turn to the experts



XCT7 - VRF 3-Pipe Heat Recovery Outdoor Unit (Continued)

| Outdoor Unit | | 38VT016173RQEE | 38VT018173RQEE | 38VT020173RQEE | 38VT022173RQEE |
|--|-----------|---------------------------|---------------------------|---------------------------|---------------------------|
| Outdoor Unit Retail Price | | £11,945 | £12,393 | £13,250 | £16,218 |
| Rated Cooling capacity | kW | 45.0 | 50.0 | 56.0 | 63.0 |
| Rated Heating capacity | kW | 50.0 | 56.0 | 61.5 | 69.0 |
| SEER - SCOP - Energy Label | kW/kW | 6.86 - 4.21 - 271.4/165.4 | 6.48 - 3.99 - 256.2/156.6 | 5.90 - 3.93 - 233.0/154.2 | 5.63 - 3.50 - 222.2/137.0 |
| Sound Pressure Level | dB(A) | 62 | 63 | 63 | 64 |
| Dimensions(HxWxD) | mm | 1690x1410x750 | 1690x1410x750 | 1690x1410x750 | 1690x1410x750 |
| Weight | kg | 366 | 366 | 375 | 375 |
| Suggested Power supply OD | V-ph-Hz-A | 380/415-3-50 - 40 | 380/415-3-50 - 50 | 380/415-3-50 - 63 | 380/415-3-50 - 63 |
| Pipe connections (Suction - Hot Gas - Liquid) | inch | 1 1/8 - 1 1/8 - 1/2 | 1 1/8 - 1 1/8 - 5/8 | 1 1/8 - 1 1/8 - 5/8 | 1 1/8 - 1 1/8 - 5/8 |
| Max pipe length - Maximum lift above/below | m | 220 - 110/90 | 220 - 110/90 | 220 - 110/90 | 220 - 110/90 |
| Refrigerant charge R410a | kg | 10.0 | 10.0 | 10.0 | 10.0 |



Turn to the experts



XCT7 - VRF 3-Pipe Heat Recovery Outdoor Unit

| Outdoor Unit | | 38VT024S73RQEE | 38VT026S73RQEE | 38VT028S73RQEE | 38VT030S73RQEE | 38VT032S73RQEE |
|---------------------|--|----------------|----------------|----------------|----------------|----------------|
| Outdoor 1 | | 38VT012173RQEE | 38VT012173RQEE | 38VT014173RQEE | 38VT014173RQEE | 38VT016173RQEE |
| Outdoor 2 | | 38VT012173RQEE | 38VT014173RQEE | 38VT014173RQEE | 38VT016173RQEE | 38VT016173RQEE |
| System Retail Price | | £19,606 | £20,085 | £20,564 | £22,227 | £23,890 |

| | | | | | | |
|--|-----------|---------------------------|---------------------------|---------------------------|---------------------------|---------------------------|
| Rated Cooling capacity | kW | 67.0 | 73.5 | 80.0 | 85.0 | 90.0 |
| Rated Heating capacity | kW | 75.0 | 82.5 | 90.0 | 95.0 | 100.0 |
| SEER - SCOP - Energy Label | kW/kW | 6.46 - 3.99 - 255.4/156.6 | 6.37 - 3.86 - 251.8/151.4 | 6.37 - 3.86 - 251.8/151.4 | 6.37 - 3.86 - 251.8/151.4 | 6.86 - 4.21 - 271.4/165.4 |
| Sound Pressure Level | dB(A) | 63 | 64 | 64 | 65 | 65 |
| Dimensions(HxWxD) | mm | 1690x1960x750 | 1690x1960x750 | 1690x1960x750 | 1690x2390x750 | 1690x2820x750 |
| Weight | kg | 257+257 | 257+257 | 257+257 | 257+366 | 366+366 |
| Suggested Power supply OD | V-ph-Hz-A | 380/415-3-50 - 32+32 | 380/415-3-50 - 32+40 | 380/415-3-50 - 40+40 | 380/415-3-50 - 40+40 | 380/415-3-50 - 40+40 |
| Pipe connections (Suction - Hot Gas - Liquid) | inch | 1 1/8 - 1 1/8 - 5/8 | 1 1/8 - 1 1/8 - 5/8 | 1 1/8 - 1 1/8 - 5/8 | 1 3/8 - 1 1/8 - 3/4 | 1 3/8 - 1 1/8 - 3/4 |
| Max pipe length - Maximum lift above/below | m | 220 - 110/90 | 220 - 110/90 | 220 - 110/90 | 220 - 110/90 | 220 - 110/90 |
| Refrigerant charge R410a | kg | 10+10 | 10+10 | 10+10 | 10+10 | 10+10 |



Turn to the experts



XCT7 - VRF 3-Pipe Heat Recovery Outdoor Unit (Continued)

| Outdoor Unit | | 38VT034S73RQEE | 38VT036S73RQEE | 38VT038S73RQEE | 38VT040S73RQEE | 38VT042S73RQEE |
|---------------------|--|----------------|----------------|----------------|----------------|----------------|
| Outdoor 1 | | 38VT016173RQEE | 38VT018173RQEE | 38VT018173RQEE | 38VT020173RQEE | 38VT020173RQEE |
| Outdoor 2 | | 38VT018173RQEE | 38VT018173RQEE | 38VT020173RQEE | 38VT020173RQEE | 38VT022173RQEE |
| System Retail Price | | £24,338 | £24,786 | £25,643 | £26,500 | £29,468 |

| | | | | | | |
|--|-----------|---------------------------|---------------------------|---------------------------|---------------------------|---------------------------|
| Rated Cooling capacity | kW | 95.0 | 100.0 | 106.0 | 112.0 | 119.0 |
| Rated Heating capacity | kW | 106.0 | 112.0 | 117.5 | 123.0 | 130.5 |
| SEER - SCOP - Energy Label | kW/kW | 6.48 - 3.99 - 256.2/156.6 | 6.48 - 3.99 - 256.2/156.6 | 5.90 - 3.93 - 233.0/154.2 | 5.90 - 3.93 - 233.0/154.2 | 5.63 - 3.50 - 222.2/137.0 |
| Sound Pressure Level | dB(A) | 66 | 66 | 66 | 66 | 67 |
| Dimensions(HxWxD) | mm | 1690x2820x750 | 1690x2820x750 | 1690x2820x750 | 1690x2820x750 | 1690x2820x750 |
| Weight | kg | 366+366 | 366+366 | 366+375 | 375+375 | 375+375 |
| Suggested Power supply OD | V-ph-Hz-A | 380/415-3-50 - 40+50 | 380/415-3-50 - 50+50 | 380/415-3-50 - 50+63 | 380/415-3-50 - 63+63 | 380/415-3-50 - 63+63 |
| Pipe connections (Suction - Hot Gas - Liquid) | inch | 1 3/8 - 1 1/8 - 3/4 | 1 5/8 - 1 3/8 - 3/4 | 1 5/8 - 1 3/8 - 3/4 | 1 5/8 - 1 3/8 - 3/4 | 1 5/8 - 1 3/8 - 3/4 |
| Max pipe length - Maximum lift above/below | m | 220 - 110/90 | 220 - 110/90 | 220 - 110/90 | 220 - 110/90 | 220 - 110/90 |
| Refrigerant charge R410a | kg | 10+10 | 10+10 | 10+10 | 10+10 | 10+10 |





Turn to the experts



XCT7 - VRF 3-Pipe Heat Recovery Outdoor Unit (Continued)

| Outdoor Unit | | 38VT044S73RQEE | 38VT046S73RQEE | 38VT048S73RQEE | 38VT050S73RQEE | 38VT052S73RQEE |
|---------------------|--|----------------|----------------|----------------|----------------|----------------|
| Outdoor 1 | | 38VT022173RQEE | 38VT014173RQEE | 38VT016173RQEE | 38VT016173RQEE | 38VT016173RQEE |
| Outdoor 2 | | 38VT022173RQEE | 38VT016173RQEE | 38VT016173RQEE | 38VT016173RQEE | 38VT018173RQEE |
| Outdoor 3 | | - | 38VT016173RQEE | 38VT016173RQEE | 38VT018173RQEE | 38VT018173RQEE |
| System Retail Price | | £32,436 | £34,172 | £35,835 | £36,283 | £36,731 |

| | | | | | | |
|--|-----------|---------------------------|---------------------------|---------------------------|---------------------------|---------------------------|
| Rated Cooling capacity | kW | 126.0 | 130.0 | 135.0 | 140.0 | 145.0 |
| Rated Heating capacity | kW | 138.0 | 145.0 | 150.0 | 156.0 | 162.0 |
| SEER - SCOP - Energy Label | kW/kW | 5.63 - 3.50 - 222.2/137.0 | 6.37 - 3.86 - 251.8/151.4 | 6.86 - 4.21 - 271.4/165.4 | 6.48 - 3.99 - 256.2/156.6 | 6.48 - 3.99 - 256.2/156.6 |
| Sound Pressure Level | dB(A) | 67 | 66 | 67 | 67 | 67 |
| Dimensions(HxWxD) | mm | 1690x2820x750 | 1690x3800x750 | 1690x4230x750 | 1690x4230x750 | 1690x4230x750 |
| Weight | kg | 375+375 | 257+366+366 | 366+366+366 | 366+366+366 | 366+366+366 |
| Suggested Power supply OD | V-ph-Hz-A | 380/415-3-50 - 63+63 | 380/415-3-50 - 40+40+40 | 380/415-3-50 - 40+40+40 | 380/415-3-50 - 40+40+50 | 380/415-3-50 - 40+50+50 |
| Pipe connections (Suction - Hot Gas - Liquid) | inch | 1 5/8 - 1 3/8 - 3/4 | 1 5/8 - 1 3/8 - 3/4 | 1 5/8 - 1 3/8 - 3/4 | 1 5/8 - 1 3/8 - 3/4 | 1 5/8 - 1 3/8 - 3/4 |
| Max pipe length - Maximum lift above/below | m | 220 - 110/90 | 220 - 110/90 | 220 - 110/90 | 220 - 110/90 | 220 - 110/90 |
| Refrigerant charge R410a | kg | 10+10 | 10+10+10 | 10+10+10 | 10+10+10 | 10+10+10 |



Turn to the experts



XCT7 - VRF 3-Pipe Heat Recovery Outdoor Unit (Continued)

| Outdoor Unit | | 38VT054S73RQEE | 38VT056S73RQEE | 38VT058S73RQEE | 38VT060S73RQEE | 38VT062S73RQEE |
|---------------------|--|----------------|----------------|----------------|----------------|----------------|
| Outdoor 1 | | 38VT018173RQEE | 38VT018173RQEE | 38VT018173RQEE | 38VT020173RQEE | 38VT020173RQEE |
| Outdoor 2 | | 38VT018173RQEE | 38VT018173RQEE | 38VT020173RQEE | 38VT020173RQEE | 38VT020173RQEE |
| Outdoor 3 | | 38VT018173RQEE | 38VT020173RQEE | 38VT020173RQEE | 38VT020173RQEE | 38VT022173RQEE |
| System Retail Price | | £37,179 | £38,036 | £38,893 | £39,750 | £42,718 |

| | | | | | | |
|--|-----------|---------------------------|---------------------------|---------------------------|---------------------------|---------------------------|
| Rated Cooling capacity | kW | 150.0 | 156.0 | 162.0 | 168.0 | 175.0 |
| Rated Heating capacity | kW | 168.0 | 173.5 | 179.0 | 184.5 | 192.0 |
| SEER - SCOP - Energy Label | kW/kW | 6.48 - 3.99 - 256.2/156.6 | 5.90 - 3.93 - 233.0/154.2 | 5.90 - 3.93 - 233.0/154.2 | 5.90 - 3.93 - 233.0/154.2 | 5.63 - 3.50 - 222.2/137.0 |
| Sound Pressure Level | dB(A) | 68 | 68 | 68 | 68 | 68 |
| Dimensions(HxWxD) | mm | 1690x4230x750 | 1690x4230x750 | 1690x4230x750 | 1690x4230x750 | 1690x4230x750 |
| Weight | kg | 366+366+366 | 366+366+375 | 366+375+375 | 375+375+375 | 375+375+375 |
| Suggested Power supply OD | V-ph-Hz-A | 380/415-3-50 - 50+50+50 | 380/415-3-50 - 50+50+63 | 380/415-3-50 - 50+63+63 | 380/415-3-50 - 63+63+63 | 380/415-3-50 - 63+63+63 |
| Pipe connections (Suction - Hot Gas - Liquid) | inch | 1 5/8 - 1 3/8 - 3/4 | 1 5/8 - 1 3/8 - 3/4 | 1 5/8 - 1 5/8 - 3/4 | 1 5/8 - 1 5/8 - 3/4 | 1 5/8 - 1 5/8 - 3/4 |
| Max pipe length - Maximum lift above/below | m | 220 - 110/90 | 220 - 110/90 | 220 - 110/90 | 220 - 110/90 | 220 - 110/90 |
| Refrigerant charge R410a | kg | 10+10+10 | 10+10+10 | 10+10+10 | 10+10+10 | 10+10+10 |





Turn to the experts



XCT7 - VRF 3-Pipe Heat Recovery Outdoor Unit (Continued)

| Outdoor Unit | | 38VT064S73RQEE | 38VT066S73RQEE | 38VT068S73RQEE | 38VT070S73RQEE | 38VT072S73RQEE |
|---------------------|--|----------------|----------------|----------------|----------------|----------------|
| Outdoor 1 | | 38VT020173RQEE | 38VT022173RQEE | 38VT016173RQEE | 38VT016173RQEE | 38VT018173RQEE |
| Outdoor 2 | | 38VT022173RQEE | 38VT022173RQEE | 38VT016173RQEE | 38VT018173RQEE | 38VT018173RQEE |
| Outdoor 3 | | 38VT022173RQEE | 38VT022173RQEE | 38VT018173RQEE | 38VT018173RQEE | 38VT018173RQEE |
| Outdoor 4 | | - | - | 38VT018173RQEE | 38VT018173RQEE | 38VT018173RQEE |
| System Retail Price | | £45,686 | £48,654 | £48,676 | £49,124 | £49,572 |

| | | | | | | |
|---|-----------|---------------------------|---------------------------|----------------------------|----------------------------|----------------------------|
| Rated Cooling capacity | kW | 182.0 | 189.0 | 190.0 | 195.0 | 200.0 |
| Rated Heating capacity | kW | 199.5 | 207.0 | 212.0 | 218.0 | 224.0 |
| SEER - SCOP - Energy Label | kW/kW | 5.63 - 3.50 - 222.2/137.0 | 5.63 - 3.50 - 222.2/137.0 | 6.48 - 3.99 - 256.2/156.6 | 6.48 - 3.99 - 256.2/156.6 | 6.48 - 3.99 - 256.2/156.6 |
| Sound Pressure Level | dB(A) | 68 | 69 | 69 | 69 | 69 |
| Dimensions(HxWxD) | mm | 1690x4230x750 | 1690x4230x750 | 1690x5640x750 | 1690x5640x750 | 1690x5640x750 |
| Weight | kg | 375+375+375 | 375+375+375 | 366+366+366+366 | 366+366+366+366 | 366+366+366+366 |
| Suggested Power supply OD | V-ph-Hz-A | 380/415-3-50 - 63+63+63 | 380/415-3-50 - 63+63+63 | 380/415-3-50 - 40+40+50+50 | 380/415-3-50 - 40+50+50+50 | 380/415-3-50 - 50+50+50+50 |
| Pipe connections (Suction - Hot Gas - Liquid) | inch | 1 5/8 - 1 5/8 - 3/4 | 1 5/8 - 1 5/8 - 3/4 | 1 5/8 - 1 5/8 - 7/8 | 1 5/8 - 1 5/8 - 7/8 | 1 5/8 - 1 5/8 - 7/8 |
| Max pipe length - Maximum lift above/below | m | 220 - 110/90 | 220 - 110/90 | 220 - 110/90 | 220 - 110/90 | 220 - 110/90 |
| Refrigerant charge R410a | kg | 10+10+10 | 10+10+10 | 10+10+10+10 | 10+10+10+10 | 10+10+10+10 |

XCT7



Turn to the experts



XCT7 - VRF 3-Pipe Heat Recovery Outdoor Unit (Continued)

| Outdoor Unit | | 38VT074S73RQEE | 38VT076S73RQEE | 38VT078S73RQEE | 38VT080S73RQEE |
|----------------------------|--|----------------|----------------|----------------|----------------|
| Outdoor 1 | | 38VT018173RQEE | 38VT018173RQEE | 38VT018173RQEE | 38VT020173RQEE |
| Outdoor 2 | | 38VT018173RQEE | 38VT018173RQEE | 38VT020173RQEE | 38VT020173RQEE |
| Outdoor 3 | | 38VT018173RQEE | 38VT020173RQEE | 38VT020173RQEE | 38VT020173RQEE |
| Outdoor 4 | | 38VT020173RQEE | 38VT020173RQEE | 38VT020173RQEE | 38VT020173RQEE |
| System Retail Price | | £50,429 | £51,286 | £52,143 | £53,000 |

| | | | | | |
|--|-----------|----------------------------|----------------------------|----------------------------|----------------------------|
| Rated Cooling capacity | kW | 206.0 | 212.0 | 218.0 | 224.0 |
| Rated Heating capacity | kW | 229.5 | 235.0 | 240.5 | 246.0 |
| SEER - SCOP - Energy Label | kW/kW | 5.90 - 3.93 - 233.0/154.2 | 5.90 - 3.93 - 233.0/154.2 | 5.90 - 3.93 - 233.0/154.2 | 5.90 - 3.93 - 233.0/154.2 |
| Sound Pressure Level | dB(A) | 69 | 69 | 69 | 69 |
| Dimensions(HxWxD) | mm | 1690x5640x750 | 1690x5640x750 | 1690x5640x750 | 1690x5640x750 |
| Weight | kg | 366+366+366+375 | 366+366+375+375 | 366+375+375+375 | 375+375+375+375 |
| Suggested Power supply OD | V-ph-Hz-A | 380/415-3-50 - 50+50+50+63 | 380/415-3-50 - 50+50+63+63 | 380/415-3-50 - 50+63+63+63 | 380/415-3-50 - 63+63+63+63 |
| Pipe connections (Suction - Hot Gas - Liquid) | inch | 1 5/8 - 1 5/8 - 7/8 | 1 5/8 - 1 5/8 - 7/8 | 1 5/8 - 1 5/8 - 7/8 | 1 5/8 - 1 5/8 - 7/8 |
| Max pipe length - Maximum lift above/below | m | 220 - 110/90 | 220 - 110/90 | 220 - 110/90 | 220 - 110/90 |
| Refrigerant charge R410a | kg | 10+10+10+10 | 10+10+10+10 | 10+10+10+10 | 10+10+10+10 |





Turn to the experts



XCT7 - VRF 3-Pipe Heat Recovery Outdoor Unit (Continued)

| Outdoor Unit | | 38VT082S73RQEE | 38VT084S73RQEE | 38VT086S73RQEE | 38VT088S73RQEE |
|----------------------------|--|----------------|----------------|----------------|----------------|
| Outdoor 1 | | 38VT020173RQEE | 38VT020173RQEE | 38VT020173RQEE | 38VT022173RQEE |
| Outdoor 2 | | 38VT020173RQEE | 38VT020173RQEE | 38VT022173RQEE | 38VT022173RQEE |
| Outdoor 3 | | 38VT020173RQEE | 38VT022173RQEE | 38VT022173RQEE | 38VT022173RQEE |
| Outdoor 4 | | 38VT022173RQEE | 38VT022173RQEE | 38VT022173RQEE | 38VT022173RQEE |
| System Retail Price | | £55,968 | £58,936 | £61,904 | £64,872 |

| | | | | | |
|--|-----------|----------------------------|----------------------------|----------------------------|----------------------------|
| Rated Cooling capacity | kW | 231.0 | 238.0 | 245.0 | 252.0 |
| Rated Heating capacity | kW | 253.5 | 261.0 | 268.5 | 276.0 |
| SEER - SCOP - Energy Label | kW/kW | 5.63 - 3.50 - 222.2/137.0 | 5.63 - 3.50 - 222.2/137.0 | 5.63 - 3.50 - 222.2/137.0 | 5.63 - 3.50 - 222.2/137.0 |
| Sound Pressure Level | dB(A) | 69 | 70 | 70 | 70 |
| Dimensions(HxWxD) | mm | 1690x5640x750 | 1690x5640x750 | 1690x5640x750 | 1690x5640x750 |
| Weight | kg | 375+375+375+375 | 375+375+375+375 | 375+375+375+375 | 375+375+375+375 |
| Suggested Power supply OD | V-ph-Hz-A | 380/415-3-50 - 63+63+63+63 | 380/415-3-50 - 63+63+63+63 | 380/415-3-50 - 63+63+63+63 | 380/415-3-50 - 63+63+63+63 |
| Pipe connections (Suction - Hot Gas - Liquid) | inch | 1 5/8 - 1 5/8 - 7/8 | 1 5/8 - 1 5/8 - 7/8 | 2 1/8 - 1 5/8 - 1 1/8 | 2 1/8 - 1 5/8 - 1 1/8 |
| Max pipe length - Maximum lift above/below | m | 220 - 110/90 | 220 - 110/90 | 220 - 110/90 | 220 - 110/90 |
| Refrigerant charge R410a | kg | 10+10+10+10 | 10+10+10+10 | 10+10+10+10 | 10+10+10+10 |



Turn to the experts



VRF Heat Recovery - Single Valve Boxes

| BS Box | | 40VV00417FRQEE | 40VV00717FRQEE | 40VV01017FRQEE |
|---|-----------|------------------|------------------|------------------|
| BS Box Retail Price | | £679 | £847 | £1,071 |
| Height x width x depth | mm | 277 x 200 x 388 | 277 x 200 x 388 | 277 x 200 x 388 |
| Weight | kg | 9 | 9 | 9 |
| Max. connectable indoor units | | 5 | 8 | 8 |
| Max. indoor capacity | kW | 11.2 | 11.2 < 18 | 18 < 28 |
| Max. pipe length from joint including valve box | m | 30 | 30 | 30 |
| Suggested Power supply | V-ph-Hz-A | 220/240-1-50 - 6 | 220/240-1-50 - 6 | 220/240-1-50 - 6 |



Turn to the experts



VRF Heat Recovery - Multi Valve Boxes

| | | |
|---|-----------|------------------|
| BS Box | | 40VV01647FRQEE |
| BS Box Retail Price | | £3,042 |
| Height x width x depth | mm | 421 x 300 x 405 |
| Weight | kg | 19 |
| Number of ports | | 4 |
| Max. connectable indoor units per port | | 5 |
| Max. connectable indoor units | | 20 |
| Max. pipe length from joint including valve box single port | m | 30 |
| Max. pipe length from joint including valve box all ports | m | 120 |
| Max IDU capacity | kW | 45 |
| Suggested Power supply | V-ph-Hz-A | 220/240-1-50 - 6 |



Turn to the experts



VRF DX Kits - DDC Type

| AHU Kit | DDC | 40VA003D7FAQEE | 40VA005D7FAQEE | 40VA010D7FAQEE | 40VA020D7FAQEE | 40VA026D7FAQEE |
|--|-------------------|------------------|------------------|------------------|-------------------|-------------------|
| Retail Price | | £694 | £684 | £735 | £862 | £883 |
| Dimensions (HxWxL) | mm | 260x165x420 | 260x165x420 | 260x165x420 | 260x165x420 | 260x165x420 |
| Weight | kg | 6 | 6 | 6 | 7 | 7 |
| Connected AHU Capacity | kW | 3.5 x 7 (1-3HP) | 7 x 14 (3-5HP) | 14 x 28 (5-10HP) | 28 x 56 (10-20HP) | 56 x 73 (20-26HP) |
| Airflow Min / Max | m ³ /h | 520 / 1950 | 720 / 3750 | 1200 / 8250 | 2600 / 16500 | 4800 / 21000 |
| Internal Volume Min / Max | L | 1.01 / 2.16 | 1.51 / 4.32 | 2.28 / 8.80 | 4.53 / 16.13 | 8.18 / 20.16 |
| Max pipe length between outdoor and DX Kit | m | *220 | *220 | *220 | *220 | *220 |
| Max pipe length between DX Kit and AHU | m | 5 | 5 | 5 | 5 | 5 |
| Pipe Connections Liquid | inch | 3/8 - 1/4 | 3/8 - 1/4 | 3/8 - 1/4 | 1/2 - 5/8 | 1/2 - 5/8 |
| Pipe Connections Gas | inch | 3/8 | 3/8 | 3/8 | 1/2 | 1/2 |
| Suggested Power supply | V-ph-Hz-A | 220/240-1-50 - 6 | 220/240-1-50 - 6 | 220/240-1-50 - 6 | 220/240-1-50 - 6 | 220/240-1-50 - 6 |

*Max. 150m Mini SD 2-Fan (4-12HP)





Turn to the experts



VRF DX Kits - DDC Type - Return Air +10H +14C

| AHU Kit | | 40VA003D7FAQEE | 40VA005D7FAQEE | 40VA005D7FAQEE | 40VA010D7FAQEE | 40VA010D7FAQEE | 40VA010D7FAQEE |
|--------------------------------------|-----------|------------------|------------------|------------------|------------------|------------------|------------------|
| Retail Price | | £694 | £684 | £684 | £735 | £735 | £735 |
| Outdoor Capacity | HP | 3 | 4 | 5 | 6 | 8 | 10 |
| Valve Boxes | No. | 1 | 1 | 1 | 1 | 1 | 1 |
| Connected AHU Capacity Min - Max | kW | 3 - 7 | 7 - 14 | 7 - 14 | 14 - 28 | 14 - 28 | 14 - 28 |
| Airflow m3/Hr Standard - (Min/Max) | m3/h | 1300 - 780/1950 | 1800 - 1080/2700 | 2500 - 1500/3750 | 3000 - 1800/4500 | 4500 - 2700/6750 | 5500 - 3300/8250 |
| Internal Volume Standard - (Min/Max) | L | 1.8 - 1.08/2.16 | 2.7 - 1.62/3.24 | 3.6 - 2.16/4.32 | 4.05 - 2.44/4.85 | 6.57 - 3.94/7.88 | 7.33 - 4.4/8.8 |
| Suggested Power supply | V-ph-Hz-A | 220/240-1-50 - 6 | 220/240-1-50 - 6 | 220/240-1-50 - 6 | 220/240-1-50 - 6 | 220/240-1-50 - 6 | 220/240-1-50 - 6 |



Turn to the experts



VRF DX Kits - DDC Type - Return Air +10H +14C (Continued)

| AHU Kit | | 40VA020D7FAQEE | 40VA020D7FAQEE | 40VA020D7FAQEE | 40VA020D7FAQEE | 40VA020D7FAQEE | 40VA026D7FAQEE |
|--------------------------------------|-----------|------------------|-------------------|--------------------|--------------------|--------------------|--------------------|
| Retail Price | | £862 | £862 | £862 | £862 | £862 | £883 |
| Outdoor Capacity | HP | 12 | 14 | 16 | 18 | 20 | 22 |
| Valve Boxes | No. | 1 | 1 | 1 | 1 | 1 | 1 |
| Connected AHU Capacity Min - Max | kW | 17 - 35 | 28 - 42 | 28 - 56 | 28 - 56 | 28 - 56 | 56 - 73 |
| Airflow m3/Hr Standard - (Min/Max) | m3/h | 6500 - 3900/9750 | 8000 - 4800/12000 | 9000 - 5400/13500 | 10000 - 6000/15000 | 11000 - 6600/16500 | 12000 - 7200/18000 |
| Internal Volume Standard - (Min/Max) | L | 8.09 - 4.85/9.71 | 9.57 - 5.74/11.48 | 11.05 - 6.63/13.26 | 12.25 - 7.35/14.69 | 13.44 - 8.06/16.13 | 14.6 - 8.76/17.52 |
| Suggested Power supply | V-ph-Hz-A | 220/240-1-50 - 6 | 220/240-1-50 - 6 | 220/240-1-50 - 6 | 220/240-1-50 - 6 | 220/240-1-50 - 6 | 220/240-1-50 - 6 |



Turn to the experts



VRF DX Kits - DDC Type - Return Air +10H +14C (Continued)

| AHU Kit | | 40VA026D7FAQEE | 40VA026D7FAQEE | 40VA020D7FAQEE | 40VA020D7FAQEE | 40VA020D7FAQEE | 40VA020D7FAQEE |
|--------------------------------------|-----------|--------------------|--------------------|---------------------|---------------------|---------------------|---------------------|
| Valve Box 2 | | - | - | 40VA020D7FAQEE | 40VA020D7FAQEE | 40VA020D7FAQEE | 40VA020D7FAQEE |
| Retail Price | | £883 | £883 | £1,724 | £1,724 | £1,724 | £1,724 |
| Outdoor Capacity | HP | 24 | 26 | 28 | 30 | 32 | 34 |
| Valve Boxes | No. | 1 | 1 | 2 | 2 | 2 | 2 |
| Connected AHU Capacity Min - Max | kW | 56 - 73 | 56 - 73 | 73 - 112 | 73 - 112 | 73 - 112 | 73 - 112 |
| Airflow m3/Hr Standard - (Min/Max) | m3/h | 13000 - 7800/19500 | 14000 - 8400/21000 | 16000 - 9600/24000 | 17000 - 10200/25500 | 18000 - 10800/27000 | 19000 - 11400/28500 |
| Internal Volume Standard - (Min/Max) | L | 15.76 - 9.46/18.91 | 16.8 - 10.08/20.16 | 19.14 - 11.48/22.97 | 20.62 - 12.37/24.74 | 22.1 - 13.26/26.52 | 23.3 - 13.98/27.95 |
| Suggested Power supply | V-ph-Hz-A | 220/240-1-50 - 6 | 220/240-1-50 - 6 | 220/240-1-50 - 6+6 | 220/240-1-50 - 6+6 | 220/240-1-50 - 6+6 | 220/240-1-50 - 6+6 |



Turn to the experts



VRF DX Kits - DDC Type - Return Air +10H +14C (Continued)

| AHU Kit | | 40VA020D7FAQEE | 40VA020D7FAQEE | 40VA020D7FAQEE | 40VA026D7FAQEE | 40VA026D7FAQEE | 40VA026D7FAQEE |
|--------------------------------------|-----------|---------------------|---------------------|---------------------|---------------------|---------------------|---------------------|
| Valve Box 2 | | 40VA020D7FAQEE | 40VA020D7FAQEE | 40VA020D7FAQEE | 40VA026D7FAQEE | 40VA026D7FAQEE | 40VA026D7FAQEE |
| Retail Price | | £1,724 | £1,724 | £1,724 | £1,766 | £1,766 | £1,766 |
| Outdoor Capacity | HP | 36 | 38 | 40 | 42 | 44 | 46 |
| Valve Boxes | No. | 2 | 2 | 2 | 2 | 2 | 2 |
| Connected AHU Capacity Min - Max | kW | 73 - 112 | 73 - 112 | 73 - 112 | 112 - 146 | 112 - 146 | 112 - 146 |
| Airflow m3/Hr Standard - (Min/Max) | m3/h | 20000 - 12000/30000 | 21000 - 12600/31500 | 22000 - 13200/33000 | 23000 - 13800/34500 | 24000 - 14400/36000 | 25000 - 15000/37500 |
| Internal Volume Standard - (Min/Max) | L | 24.5 - 14.7/29.38 | 25.69 - 15.41/30.82 | 26.88 - 16.12/32.26 | 28.04 - 16.82/33.65 | 29.2 - 16.52/35.04 | 30.36 - 18.22/36.43 |
| Suggested Power supply | V-ph-Hz-A | 220/240-1-50 - 6+6 | 220/240-1-50 - 6+6 | 220/240-1-50 - 6+6 | 220/240-1-50 - 6+6 | 220/240-1-50 - 6+6 | 220/240-1-50 - 6+6 |



Turn to the experts



VRF DX Kits - DDC Type - Return Air +10H +14C (Continued)

| AHU Kit | | 40VA026D7FAQEE | 40VA026D7FAQEE | 40VA020D7FAQEE | 40VA020D7FAQEE | 40VA020D7FAQEE | 40VA020D7FAQEE |
|--------------------------------------|-----------|---------------------|---------------------|----------------------|----------------------|----------------------|----------------------|
| Valve Box 2 | | 40VA026D7FAQEE | 40VA026D7FAQEE | 40VA020D7FAQEE | 40VA020D7FAQEE | 40VA020D7FAQEE | 40VA020D7FAQEE |
| Valve Box 3 | | - | - | 40VA020D7FAQEE | 40VA020D7FAQEE | 40VA020D7FAQEE | 40VA020D7FAQEE |
| Retail Price | | £1,766 | £1,766 | £2,586 | £2,586 | £2,586 | £2,586 |
| Outdoor Capacity | HP | 48 | 50 | 52 | 54 | 56 | 58 |
| Valve Boxes | No. | 2 | 2 | 3 | 3 | 3 | 3 |
| Connected AHU Capacity Min - Max | kW | 112 - 146 | 112 - 146 | 112 - 146 | 146 - 168 | 146 - 168 | 146 - 168 |
| Airflow m3/Hr Standard - (Min/Max) | m3/h | 26000 - 15600/39000 | 27000 - 16200/40500 | 28000 - 16800/42000 | 30000 - 18000/45000 | 31000 - 18600/46500 | 32000 - 19200/48000 |
| Internal Volume Standard - (Min/Max) | L | 31.52 - 18.92/37.82 | 32.56 - 19.54/39.07 | 33.6 - 20.16/40.32 | 36.75 - 22.05/44.07 | 37.94 - 22.76/45.51 | 39.13 - 23.47/46.95 |
| Suggested Power supply | V-ph-Hz-A | 220/240-1-50 - 6+6 | 220/240-1-50 - 6+6 | 220/240-1-50 - 6+6+6 | 220/240-1-50 - 6+6+6 | 220/240-1-50 - 6+6+6 | 220/240-1-50 - 6+6+6 |



Turn to the experts



VRF DX Kits - DDC Type - Return Air +10H +14C (Continued)

| AHU Kit | | 40VA020D7FAQEE | 40VA026D7FAQEE | 40VA026D7FAQEE | 40VA026D7FAQEE | 40VA026D7FAQEE | 40VA026D7FAQEE |
|--------------------------------------|-----------|----------------------|------------------------|------------------------|------------------------|------------------------|------------------------|
| Valve Box 2 | | 40VA020D7FAQEE | 40VA026D7FAQEE | 40VA026D7FAQEE | 40VA026D7FAQEE | 40VA026D7FAQEE | 40VA026D7FAQEE |
| Valve Box 3 | | 40VA020D7FAQEE | 40VA026D7FAQEE | 40VA026D7FAQEE | 40VA026D7FAQEE | 40VA026D7FAQEE | 40VA026D7FAQEE |
| Valve Box 4 | | - | 40VA026D7FAQEE | 40VA026D7FAQEE | 40VA026D7FAQEE | 40VA026D7FAQEE | 40VA026D7FAQEE |
| Retail Price | | £2,586 | £3,532 | £3,532 | £3,532 | £3,532 | £3,532 |
| Outdoor Capacity | HP | 60 | 62 | 64 | 66 | 68 | 70 |
| Valve Boxes | No. | 3 | 4 | 4 | 4 | 4 | 4 |
| Connected AHU Capacity Min - Max | kW | 146 - 168 | 168 - 219 | 168 - 219 | 168 - 219 | 168 - 219 | 168 - 219 |
| Airflow m3/Hr Standard - (Min/Max) | m3/h | 33000 - 19800/49500 | 34000 - 20400/51000 | 35000 - 21000/52500 | 36000 - 21600/54000 | 37000 - 22200/55500 | 38000 - 22800/57000 |
| Internal Volume Standard - (Min/Max) | L | 40.32 - 24.18/48.38 | 41.48 - 24.88/49.78 | 42.64 - 25.58/51.17 | 43.8 - 26.28/52.56 | 44.96 - 26.98/53.95 | 46.12 - 27.68/55.34 |
| Suggested Power supply | V-ph-Hz-A | 220/240-1-50 - 6+6+6 | 220/240-1-50 - 6+6+6+6 | 220/240-1-50 - 6+6+6+6 | 220/240-1-50 - 6+6+6+6 | 220/240-1-50 - 6+6+6+6 | 220/240-1-50 - 6+6+6+6 |





Turn to the experts



VRF DX Kits - DDC Type - Return Air +10H +14C (Continued)

| AHU Kit | | 40VA026D7FAQEE | 40VA026D7FAQEE | 40VA026D7FAQEE | 40VA026D7FAQEE | 40VA020D7FAQEE | 40VA026D7FAQEE |
|--------------------------------------|-----------|------------------------|------------------------|------------------------|------------------------|------------------------|------------------------|
| Valve Box 2 | | 40VA026D7FAQEE | 40VA026D7FAQEE | 40VA026D7FAQEE | 40VA026D7FAQEE | 40VA020D7FAQEE | 40VA026D7FAQEE |
| Valve Box 3 | | 40VA026D7FAQEE | 40VA026D7FAQEE | 40VA026D7FAQEE | 40VA026D7FAQEE | 40VA020D7FAQEE | 40VA026D7FAQEE |
| Valve Box 4 | | 40VA026D7FAQEE | 40VA026D7FAQEE | 40VA026D7FAQEE | 40VA026D7FAQEE | 40VA020D7FAQEE | 40VA026D7FAQEE |
| Retail Price | | £3,532 | £3,532 | £3,532 | £3,532 | £3,448 | £3,532 |
| Outdoor Capacity | HP | 72 | 74 | 76 | 78 | 80 | 82 |
| Valve Boxes | No. | 4 | 4 | 4 | 4 | 4 | 4 |
| Connected AHU Capacity Min - Max | kW | 168 - 219 | 168 - 219 | 168 - 219 | 168 - 219 | 219 - 224 | 224 - 292 |
| Airflow m3/Hr Standard - (Min/Max) | m3/h | 39000 - 23400/58500 | 40000 - 24000/6000 | 41000 - 24600/61500 | 42000 - 25200/63000 | 44000 - 26400/66000 | 45000 - 27000/67500 |
| Internal Volume Standard - (Min/Max) | L | 47.28 - 28.38/56.73 | 48.32 - 29/57.98 | 49.36 - 29.62/59.23 | 50.4 - 32.4/60.48 | 53.76 - 32.6/64.52 | 54.92 - 32.94/65.91 |
| Suggested Power supply | V-ph-Hz-A | 220/240-1-50 - 6+6+6+6 | 220/240-1-50 - 6+6+6+6 | 220/240-1-50 - 6+6+6+6 | 220/240-1-50 - 6+6+6+6 | 220/240-1-50 - 6+6+6+6 | 220/240-1-50 - 6+6+6+6 |



Turn to the experts



VRF DX Kits - DDC Type - Return Air +10H +14C (Continued)

| AHU Kit | | 40VA026D7FAQEE | 40VA026D7FAQEE | 40VA026D7FAQEE | 40VA026D7FAQEE | 40VA026D7FAQEE | 40VA026D7FAQEE |
|--------------------------------------|-----------|------------------------|------------------------|------------------------|------------------------|------------------------|------------------------|
| Valve Box 2 | | 40VA026D7FAQEE | 40VA026D7FAQEE | 40VA026D7FAQEE | 40VA026D7FAQEE | 40VA026D7FAQEE | 40VA026D7FAQEE |
| Valve Box 3 | | 40VA026D7FAQEE | 40VA026D7FAQEE | 40VA026D7FAQEE | 40VA026D7FAQEE | 40VA026D7FAQEE | 40VA026D7FAQEE |
| Valve Box 4 | | 40VA026D7FAQEE | 40VA026D7FAQEE | 40VA026D7FAQEE | 40VA026D7FAQEE | 40VA026D7FAQEE | 40VA026D7FAQEE |
| Retail Price | | £3,532 | £3,532 | £3,532 | £3,532 | £3,532 | £3,532 |
| Outdoor Capacity | HP | 84 | 86 | 88 | 90 | 92 | 94 |
| Valve Boxes | No. | 4 | 4 | 4 | 4 | 4 | 4 |
| Connected AHU Capacity Min - Max | kW | 224 - 292 | 224 - 292 | 224 - 292 | 224 - 292 | 224 - 292 | 224 - 292 |
| Airflow m3/Hr Standard - (Min/Max) | m3/h | 46000 - 27600/69000 | 47000 - 28200/70500 | 48000 - 28800/72000 | 49000 - 29400/73500 | 50000 - 30000/75000 | 51000 - 30600/76500 |
| Internal Volume Standard - (Min/Max) | L | 56.08 - 33.64/67.3 | 57.24 - 34.34/68.69 | 58.4 - 35.04/70.08 | 59.56 - 35.74/71.47 | 60.72 - 36.44/72.86 | 61.88 - 37.14/74.25 |
| Suggested Power supply | V-ph-Hz-A | 220/240-1-50 - 6+6+6+6 | 220/240-1-50 - 6+6+6+6 | 220/240-1-50 - 6+6+6+6 | 220/240-1-50 - 6+6+6+6 | 220/240-1-50 - 6+6+6+6 | 220/240-1-50 - 6+6+6+6 |





Turn to the experts



VRF DX Kits - DDC Type - Return Air +10H +14C (Continued)

| AHU Kit | | 40VA026D7FAQEE | 40VA026D7FAQEE | 40VA026D7FAQEE | 40VA026D7FAQEE | 40VA026D7FAQEE |
|--------------------------------------|-----------|------------------------|------------------------|------------------------|------------------------|------------------------|
| Valve Box 2 | | 40VA026D7FAQEE | 40VA026D7FAQEE | 40VA026D7FAQEE | 40VA026D7FAQEE | 40VA026D7FAQEE |
| Valve Box 3 | | 40VA026D7FAQEE | 40VA026D7FAQEE | 40VA026D7FAQEE | 40VA026D7FAQEE | 40VA026D7FAQEE |
| Valve Box 4 | | 40VA026D7FAQEE | 40VA026D7FAQEE | 40VA026D7FAQEE | 40VA026D7FAQEE | 40VA026D7FAQEE |
| Retail Price | | £3,532 | £3,532 | £3,532 | £3,532 | £3,532 |
| Outdoor Capacity | HP | 96 | 98 | 100 | 102 | 104 |
| Valve Boxes | No. | 4 | 4 | 4 | 4 | 4 |
| Connected AHU Capacity Min - Max | kW | 224 - 292 | 224 - 292 | 224 - 292 | 224 - 292 | 224 - 292 |
| Airflow m3/Hr Standard - (Min/Max) | m3/h | 52000 - 31200/78000 | 53000 - 31800/79500 | 54000 - 32400/81000 | 55000 - 33000/82500 | 56000 - 33600/84000 |
| Internal Volume Standard - (Min/Max) | L | 63.04 - 37.84/75.64 | 64.08 - 38.46/76.89 | 65.12 - 38.8/78.14 | 66.16 - 39.7/79.39 | 67.2 - 40.32/80.64 |
| Suggested Power supply | V-ph-Hz-A | 220/240-1-50 - 6+6+6+6 | 220/240-1-50 - 6+6+6+6 | 220/240-1-50 - 6+6+6+6 | 220/240-1-50 - 6+6+6+6 | 220/240-1-50 - 6+6+6+6 |



Turn to the experts



VRF DX Kits - DDC Type - Fresh Air +5H +35C

| AHU Kit | | 40VA003D7FAQEE | 40VA005D7FAQEE | 40VA005D7FAQEE | 40VA010D7FAQEE | 40VA010D7FAQEE | 40VA010D7FAQEE |
|--------------------------------------|-----------|------------------|------------------|------------------|------------------|------------------|------------------|
| Retail Price | | £694 | £684 | £684 | £735 | £735 | £735 |
| Outdoor Capacity | HP | 3 | 4 | 5 | 6 | 8 | 10 |
| Valve Boxes | No. | 1 | 1 | 1 | 1 | 1 | 1 |
| Connected AHU Capacity Min - Max | kW | 3 - 7 | 7 - 14 | 7 - 14 | 14 - 28 | 14 - 28 | 14 - 28 |
| Airflow m3/Hr Standard - (Min/Max) | m3/h | 650 - 520/845 | 900 - 720/1170 | 1250 - 1000/1625 | 1500 - 1200/1950 | 2250 - 1800/2925 | 2750 - 2200/3575 |
| Internal Volume Standard - (Min/Max) | L | 1.26 - 1.01/1.51 | 1.89 - 1.51/2.27 | 2.52 - 2.02/3.02 | 3.56 - 2.85/4.27 | 4.6 - 3.68/5.52 | 5.13 - 4.11/6.16 |
| Suggested Power supply | V-ph-Hz-A | 220/240-1-50 - 6 | 220/240-1-50 - 6 | 220/240-1-50 - 6 | 220/240-1-50 - 6 | 220/240-1-50 - 6 | 220/240-1-50 - 6 |



Turn to the experts



VRF DX Kits - DDC Type - Fresh Air +5H +35C (Continued)

| AHU Kit | | 40VA020D7FAQEE | 40VA020D7FAQEE | 40VA020D7FAQEE | 40VA020D7FAQEE | 40VA020D7FAQEE | 40VA026D7FAQEE |
|--------------------------------------|-----------|------------------|------------------|------------------|-------------------|-------------------|--------------------|
| Retail Price | | £862 | £862 | £862 | £862 | £862 | £883 |
| Outdoor Capacity | HP | 12 | 14 | 16 | 18 | 20 | 22 |
| Valve Boxes | No. | 1 | 1 | 1 | 1 | 1 | 1 |
| Connected AHU Capacity Min - Max | kW | 17 - 35 | 28 - 42 | 28 - 56 | 28 - 56 | 28 - 56 | 56 - 73 |
| Airflow m3/Hr Standard - (Min/Max) | m3/h | 3250 - 2600/4225 | 4000 - 3200/5200 | 4500 - 3600/5850 | 5000 - 4000/6500 | 5500 - 4400/7150 | 6000 - 4800/7800 |
| Internal Volume Standard - (Min/Max) | L | 5.66 - 4.53/6.8 | 6.7 - 5.36/8.04 | 7.74 - 6.19/9.28 | 8.57 - 6.86/10.29 | 9.41 - 7.53/11.29 | 10.22 - 8.18/12.26 |
| Suggested Power supply | V-ph-Hz-A | 220/240-1-50 - 6 | 220/240-1-50 - 6 | 220/240-1-50 - 6 | 220/240-1-50 - 6 | 220/240-1-50 - 6 | 220/240-1-50 - 6 |



Turn to the experts



VRF DX Kits - DDC Type - Fresh Air +5H +35C (Continued)

| AHU Kit | | 40VA026D7FAQEE | 40VA026D7FAQEE | 40VA020D7FAQEE | 40VA020D7FAQEE | 40VA020D7FAQEE | 40VA020D7FAQEE |
|--------------------------------------|-----------|--------------------|--------------------|--------------------|---------------------|---------------------|---------------------|
| Valve Box 2 | | - | - | 40VA020D7FAQEE | 40VA020D7FAQEE | 40VA020D7FAQEE | 40VA020D7FAQEE |
| Retail Price | | £883 | £883 | £1,724 | £1,724 | £1,724 | £1,724 |
| Outdoor Capacity | HP | 24 | 26 | 28 | 30 | 32 | 34 |
| Valve Boxes | No. | 1 | 1 | 2 | 2 | 2 | 2 |
| Connected AHU Capacity Min - Max | kW | 56 - 73 | 56 - 73 | 73 - 112 | 73 - 112 | 73 - 112 | 73 - 112 |
| Airflow m3/Hr Standard - (Min/Max) | m3/h | 6500 - 5200/8450 | 7000 - 5600/9100 | 8000 - 6400/10400 | 8500 - 6800/11050 | 9000 - 7200/11700 | 9500 - 7600/12350 |
| Internal Volume Standard - (Min/Max) | L | 11.03 - 8.83/13.24 | 11.76 - 9.41/14.11 | 13.4 - 10.72/16.08 | 14.43 - 11.55/17.32 | 15.48 - 12.38/18.56 | 16.31 - 13.05/19.57 |
| Suggested Power supply | V-ph-Hz-A | 220/240-1-50 - 6 | 220/240-1-50 - 6 | 220/240-1-50 - 6+6 | 220/240-1-50 - 6+6 | 220/240-1-50 - 6+6 | 220/240-1-50 - 6+6 |





Turn to the experts



VRF DX Kits - DDC Type - Fresh Air +5H +35C (Continued)

| AHU Kit | | 40VA020D7FAQEE | 40VA020D7FAQEE | 40VA020D7FAQEE | 40VA026D7FAQEE | 40VA026D7FAQEE | 40VA026D7FAQEE |
|--------------------------------------|-----------|---------------------|---------------------|--------------------|---------------------|--------------------|---------------------|
| Valve Box 2 | | £1,724 | £1,724 | £1,724 | £1,766 | £1,766 | £1,766 |
| Retail Price | | £1,690 | £1,690 | £1,690 | £1,730 | £1,730 | £1,730 |
| Outdoor Capacity | HP | 36 | 38 | 40 | 42 | 44 | 46 |
| Valve Boxes | No. | 2 | 2 | 2 | 2 | 2 | 2 |
| Connected AHU Capacity Min - Max | kW | 73 - 112 | 73 - 112 | 73 - 112 | 112 - 146 | 112 - 146 | 112 - 146 |
| Airflow m3/Hr Standard - (Min/Max) | m3/h | 10000 - 8000/13000 | 10500 - 8400/13650 | 11000 - 8800/14300 | 11500 - 9200/14950 | 12000 - 9600/15600 | 12500 - 10000/16250 |
| Internal Volume Standard - (Min/Max) | L | 17.14 - 13.72/20.58 | 17.97 - 14.39/21.59 | 18.8 - 15.06/22.6 | 19.63 - 15.73/23.61 | 20.46 - 16.4/24.62 | 21.29 - 17.07/25.63 |
| Suggested Power supply | V-ph-Hz-A | 220/240-1-50 - 6+6 | 220/240-1-50 - 6+6 | 220/240-1-50 - 6+6 | 220/240-1-50 - 6+6 | 220/240-1-50 - 6+6 | 220/240-1-50 - 6+6 |



Turn to the experts



VRF DX Kits - DDC Type - Fresh Air +5H +35C (Continued)

| AHU Kit | | 40VA026D7FAQEE | 40VA026D7FAQEE | 40VA020D7FAQEE | 40VA020D7FAQEE | 40VA020D7FAQEE | 40VA020D7FAQEE |
|--------------------------------------|-----------|---------------------|---------------------|----------------------|----------------------|----------------------|----------------------|
| Valve Box 2 | | 40VA026D7FAQEE | 40VA026D7FAQEE | 40VA020D7FAQEE | 40VA020D7FAQEE | 40VA020D7FAQEE | 40VA020D7FAQEE |
| Valve Box 3 | | - | - | 40VA020D7FAQEE | 40VA020D7FAQEE | 40VA020D7FAQEE | 40VA020D7FAQEE |
| Retail Price | | £1,766 | £1,766 | £2,586 | £2,586 | £2,586 | £2,586 |
| Outdoor Capacity | HP | 48 | 50 | 52 | 54 | 56 | 58 |
| Valve Boxes | No. | 2 | 2 | 3 | 3 | 3 | 3 |
| Connected AHU Capacity Min - Max | kW | 112 - 146 | 112 - 146 | 112 - 146 | 146 - 168 | 146 - 168 | 146 - 168 |
| Airflow m3/Hr Standard - (Min/Max) | m3/h | 13000 - 10400/16900 | 13500 - 10800/17550 | 14000 - 11200/18200 | 14500 - 11600/18850 | 15000 - 12000/19500 | 15500 - 12400/20150 |
| Internal Volume Standard - (Min/Max) | L | 22.12 - 17.74/26.64 | 22.95 - 18.41/27.65 | 23.78 - 19.08/28.66 | 24.61 - 19.75/29.67 | 25.44 - 20.42/30.68 | 26.27 - 21.09/31.69 |
| Suggested Power supply | V-ph-Hz-A | 220/240-1-50 - 6+6 | 220/240-1-50 - 6+6 | 220/240-1-50 - 6+6+6 | 220/240-1-50 - 6+6+6 | 220/240-1-50 - 6+6+6 | 220/240-1-50 - 6+6+6 |





Turn to the experts



VRF DX Kits - DDC Type - Fresh Air +5H +35C (Continued)

| AHU Kit | | 40VA020D7FAQEE | 40VA026D7FAQEE | 40VA026D7FAQEE | 40VA026D7FAQEE | 40VA026D7FAQEE | 40VA026D7FAQEE |
|--------------------------------------|-----------|----------------------|------------------------|------------------------|------------------------|------------------------|------------------------|
| Valve Box 2 | | 40VA020D7FAQEE | 40VA026D7FAQEE | 40VA026D7FAQEE | 40VA026D7FAQEE | 40VA026D7FAQEE | 40VA026D7FAQEE |
| Valve Box 3 | | 40VA020D7FAQEE | 40VA026D7FAQEE | 40VA026D7FAQEE | 40VA026D7FAQEE | 40VA026D7FAQEE | 40VA026D7FAQEE |
| Valve Box 4 | | - | 40VA026D7FAQEE | 40VA026D7FAQEE | 40VA026D7FAQEE | 40VA026D7FAQEE | 40VA026D7FAQEE |
| Retail Price | | £2,586 | £3,532 | £3,532 | £3,532 | £3,532 | £3,532 |
| Outdoor Capacity | HP | 60 | 62 | 64 | 66 | 68 | 70 |
| Valve Boxes | No. | 3 | 4 | 4 | 4 | 4 | 4 |
| Connected AHU Capacity Min - Max | kW | 146 - 168 | 168 - 219 | 168 - 219 | 168 - 219 | 168 - 219 | 168 - 219 |
| Airflow m3/Hr Standard - (Min/Max) | m3/h | 16000 - 12800/20800 | 16500 - 13200/21450 | 17000 - 13600/22100 | 17500 - 14000/22750 | 18000 - 14400/23400 | 18500 - 14800/24050 |
| Internal Volume Standard - (Min/Max) | L | 27.1 - 21.76/32.7 | 27.93 - 22.43/33.71 | 28.76 - 23.1/34.72 | 29.59 - 23.77/35.73 | 30.42 - 24.44/36.74 | 31.25 - 25.11/37.75 |
| Suggested Power supply | V-ph-Hz-A | 220/240-1-50 - 6+6+6 | 220/240-1-50 - 6+6+6+6 | 220/240-1-50 - 6+6+6+6 | 220/240-1-50 - 6+6+6+6 | 220/240-1-50 - 6+6+6+6 | 220/240-1-50 - 6+6+6+6 |



Turn to the experts



VRF DX Kits - DDC Type - Fresh Air +5H +35C (Continued)

| AHU Kit | | 40VA026D7FAQEE | 40VA026D7FAQEE | 40VA026D7FAQEE | 40VA026D7FAQEE | 40VA020D7FAQEE | 40VA026D7FAQEE |
|--------------------------------------|-----------|------------------------|------------------------|------------------------|------------------------|------------------------|------------------------|
| Valve Box 2 | | 40VA026D7FAQEE | 40VA026D7FAQEE | 40VA026D7FAQEE | 40VA026D7FAQEE | 40VA020D7FAQEE | 40VA026D7FAQEE |
| Valve Box 3 | | 40VA026D7FAQEE | 40VA026D7FAQEE | 40VA026D7FAQEE | 40VA026D7FAQEE | 40VA020D7FAQEE | 40VA026D7FAQEE |
| Valve Box 4 | | 40VA026D7FAQEE | 40VA026D7FAQEE | 40VA026D7FAQEE | 40VA026D7FAQEE | 40VA020D7FAQEE | 40VA026D7FAQEE |
| Retail Price | | £3,532 | £3,532 | £3,532 | £3,532 | £3,448 | £3,532 |
| Outdoor Capacity | HP | 72 | 74 | 76 | 78 | 80 | 82 |
| Valve Boxes | No. | 4 | 4 | 4 | 4 | 4 | 4 |
| Connected AHU Capacity Min - Max | kW | 168 - 219 | 168 - 219 | 168 - 219 | 168 - 219 | 219 - 224 | 224 - 292 |
| Airflow m3/Hr Standard - (Min/Max) | m3/h | 19000 - 15200/24700 | 19500 - 15600/25350 | 20000 - 16000/26000 | 20500 - 16400/26650 | 21000 - 16800/27300 | 21500 - 17200/27950 |
| Internal Volume Standard - (Min/Max) | L | 32.08 - 25.78/38.76 | 32.91 - 26.45/39.77 | 33.74 - 27.12/40.78 | 34.57 - 27.79/41.79 | 35.4 - 28.46/42.8 | 36.23 - 29.13/43.81 |
| Suggested Power supply | V-ph-Hz-A | 220/240-1-50 - 6+6+6+6 | 220/240-1-50 - 6+6+6+6 | 220/240-1-50 - 6+6+6+6 | 220/240-1-50 - 6+6+6+6 | 220/240-1-50 - 6+6+6+6 | 220/240-1-50 - 6+6+6+6 |



Turn to the experts



VRF DX Kits - DDC Type - Fresh Air +5H +35C (Continued)

| AHU Kit | | 40VA026D7FAQEE | 40VA026D7FAQEE | 40VA026D7FAQEE | 40VA026D7FAQEE | 40VA026D7FAQEE | 40VA026D7FAQEE |
|--------------------------------------|-----------|------------------------|------------------------|------------------------|------------------------|------------------------|------------------------|
| Valve Box 2 | | 40VA026D7FAQEE | 40VA026D7FAQEE | 40VA026D7FAQEE | 40VA026D7FAQEE | 40VA026D7FAQEE | 40VA026D7FAQEE |
| Valve Box 3 | | 40VA026D7FAQEE | 40VA026D7FAQEE | 40VA026D7FAQEE | 40VA026D7FAQEE | 40VA026D7FAQEE | 40VA026D7FAQEE |
| Valve Box 4 | | 40VA026D7FAQEE | 40VA026D7FAQEE | 40VA026D7FAQEE | 40VA026D7FAQEE | 40VA026D7FAQEE | 40VA026D7FAQEE |
| Retail Price | | £3,532 | £3,532 | £3,532 | £3,532 | £3,532 | £3,532 |
| Outdoor Capacity | HP | 84 | 86 | 88 | 90 | 92 | 94 |
| Valve Boxes | No. | 4 | 4 | 4 | 4 | 4 | 4 |
| Connected AHU Capacity Min - Max | kW | 224 - 292 | 224 - 292 | 224 - 292 | 224 - 292 | 224 - 292 | 224 - 292 |
| Airflow m3/Hr Standard - (Min/Max) | m3/h | 22000 - 17600/28600 | 22500 - 18000/29250 | 23000 - 18400/29900 | 23500 - 18800/30550 | 24000 - 19200/31200 | 24500 - 19600/31850 |
| Internal Volume Standard - (Min/Max) | L | 37.06 - 29.8/44.82 | 37.89 - 30.47/45.83 | 38.72 - 31.14/46.84 | 39.55 - 31.81/47.85 | 40.38 - 32.48/48.86 | 41.21 - 33.15/49.87 |
| Suggested Power supply | V-ph-Hz-A | 220/240-1-50 - 6+6+6+6 | 220/240-1-50 - 6+6+6+6 | 220/240-1-50 - 6+6+6+6 | 220/240-1-50 - 6+6+6+6 | 220/240-1-50 - 6+6+6+6 | 220/240-1-50 - 6+6+6+6 |



Turn to the experts



VRF DX Kits - DDC Type - Fresh Air +5H +35C (Continued)

| AHU Kit | | 40VA026D7FAQEE | 40VA026D7FAQEE | 40VA026D7FAQEE | 40VA026D7FAQEE | 40VA026D7FAQEE |
|--------------------------------------|-----------|------------------------|------------------------|------------------------|------------------------|------------------------|
| Valve Box 2 | | 40VA026D7FAQEE | 40VA026D7FAQEE | 40VA026D7FAQEE | 40VA026D7FAQEE | 40VA026D7FAQEE |
| Valve Box 3 | | 40VA026D7FAQEE | 40VA026D7FAQEE | 40VA026D7FAQEE | 40VA026D7FAQEE | 40VA026D7FAQEE |
| Valve Box 4 | | 40VA026D7FAQEE | 40VA026D7FAQEE | 40VA026D7FAQEE | 40VA026D7FAQEE | 40VA026D7FAQEE |
| Retail Price | | £3,532 | £3,532 | £3,532 | £3,532 | £3,532 |
| Outdoor Capacity | HP | 96 | 98 | 100 | 102 | 104 |
| Valve Boxes | No. | 4 | 4 | 4 | 4 | 4 |
| Connected AHU Capacity Min - Max | kW | 224 - 292 | 224 - 292 | 224 - 292 | 224 - 292 | 224 - 292 |
| Airflow m3/Hr Standard - (Min/Max) | m3/h | 25000 - 20000/32500 | 25500 - 20400/33150 | 26000 - 20800/33800 | 26500 - 21200/34450 | 27000 - 21600/35100 |
| Internal Volume Standard - (Min/Max) | L | 42.04 - 33.82/50.88 | 42.87 - 34.49/51.89 | 43.7 - 35.16/52.9 | 44.53 - 35.83/53.91 | 45.36 - 36.5/54.92 |
| Suggested Power supply | V-ph-Hz-A | 220/240-1-50 - 6+6+6+6 | 220/240-1-50 - 6+6+6+6 | 220/240-1-50 - 6+6+6+6 | 220/240-1-50 - 6+6+6+6 | 220/240-1-50 - 6+6+6+6 |





Turn to the experts



VRF Indoor Units - High Wall

| Indoor Unit | | 40VK005S-7S2-QEE | 40VK007S-7S2-QEE | 40VK009S-7S2-QEE | 40VK012S-7S2-QEE | 40VK016S-7S2-QEE |
|---------------------------------|-----------|------------------|------------------|------------------|------------------|------------------|
| Indoor Unit Retail Price* | | £663 | £674 | £689 | £699 | £755 |
| Rated Cooling capacity | kW | 1.5 | 2.2 | 2.8 | 3.6 | 4.5 |
| Rated Heating capacity | kW | 1.7 | 2.5 | 3.2 | 4.0 | 5.0 |
| Sound pressure level (H/M/L) | dB(A) | 33/31/29 | 35/31/29 | 36/31/29 | 37/33/29 | 39/36/34 |
| Dimensions (HxWxD) | mm | 280x855x208 | 280x855x208 | 280x855x208 | 280x855x208 | 336x1115x243 |
| Weight | kg | 10 | 10 | 10 | 10 | 16 |
| Suggested Power supply | V-ph-Hz-A | 220/240-1-50 - 6 | 220/240-1-50 - 6 | 220/240-1-50 - 6 | 220/240-1-50 - 6 | 220/240-1-50 - 6 |
| Pipe Connections (Gas - Liquid) | inch | 3/8 - 1/4 | 3/8 - 1/4 | 3/8 - 1/4 | 1/2 - 1/4 | 1/2 - 1/4 |

* 40VC167FQEE Wireless remote included as standard



Turn to the experts



VRF Indoor Units - High Wall (Continued)

| Indoor Unit | | 40VK018S-7S2-QEE | 40VK024S-7S2-QEE | 40VK028S-7S2-QEE | 40VK030S-7S2-QEE |
|---------------------------------|-----------|------------------|------------------|------------------|------------------|
| Indoor Unit Retail Price* | | £776 | £847 | £1,000 | £1,051 |
| Rated Cooling capacity | kW | 5.6 | 7.1 | 8.0 | 9.0 |
| Rated Heating capacity | kW | 6.3 | 8.0 | 9.0 | 10.0 |
| Sound pressure level (H/M/L) | dB(A) | 40/39/35 | 44/40/36 | 48/43/40 | 49/44/41 |
| Dimensions (HxWxD) | mm | 336x1115x243 | 336x1115x243 | 365x1316x270 | 365x1316x270 |
| Weight | kg | 16 | 16 | 22 | 22 |
| Suggested Power supply | V-ph-Hz-A | 220/240-1-50 - 6 | 220/240-1-50 - 6 | 220/240-1-50 - 6 | 220/240-1-50 - 6 |
| Pipe Connections (Gas - Liquid) | inch | 1/2 - 1/4 | 5/8 - 3/8 | 5/8 - 3/8 | 5/8 - 3/8 |

* 40VC167FQEE Wireless remote included as standard



Turn to the experts



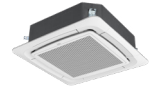
VRF Indoor Units - Compact Cassette

| Indoor Unit | | 40VU005C-7S-QEE | 40VU007C-7S-QEE | 40VU009C-7S-QEE | 40VU012C-7S-QEE | 40VU016C-7S-QEE | 40VU018C-7S-QEE |
|--|--|-----------------------|-----------------------|-----------------------|-----------------------|-----------------------|-----------------------|
| Facia Panel | | 40VPU018C7SQEE | 40VPU018C7SQEE | 40VPU018C7SQEE | 40VPU018C7SQEE | 40VPU018C7SQEE | 40VPU018C7SQEE |
| Indoor Unit Retail Price (Inc. Facia Panel) | | £847 | £867 | £939 | £980 | £1,031 | £1,102 |

| | | | | | | | |
|---------------------------------|-----------|------------------|------------------|------------------|------------------|------------------|------------------|
| Rated Cooling capacity | kW | 1.5 | 2.2 | 2.8 | 3.6 | 4.5 | 5.6 |
| Rated Heating capacity | kW | 1.7 | 2.5 | 3.2 | 4.0 | 5.0 | 6.3 |
| Sound pressure level(H/M/L) | dB(A) | 32/30/29 | 32/30/29 | 32/30/29 | 33/30/29 | 33/30/29 | 34/32/30 |
| Dimensions (HxWxD) indoor | mm | 260x570x570 | 260x570x570 | 260x570x570 | 260x570x570 | 260x570x570 | 260x570x570 |
| Dimensions (HxWxD) panel | mm | 60x620x620 | 60x620x620 | 60x620x620 | 60x620x620 | 60x620x620 | 60x620x620 |
| Weight indoor/panel | kg | 16/3 | 16/3 | 16/3 | 19/3 | 19/3 | 19/3 |
| Suggested Power supply | V-ph-Hz-A | 220/240-1-50 - 6 | 220/240-1-50 - 6 | 220/240-1-50 - 6 | 220/240-1-50 - 6 | 220/240-1-50 - 6 | 220/240-1-50 - 6 |
| Pipe Connections (Gas - Liquid) | inch | 3/8 - 1/4 | 3/8 - 1/4 | 3/8 - 1/4 | 1/2 - 1/4 | 1/2 - 1/4 | 1/2 - 1/4 |



Turn to the experts



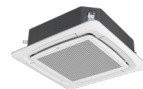
VRF Indoor Units - Round Way Cassette

| Indoor Unit | | 40VU007R-7E-QEE | 40VU009R-7E-QEE | 40VU012R-7E-QEE | 40VU016R-7E-QEE | 40VU018R-7E-QEE | 40VU024R-7E-QEE |
|--|--|-----------------------|-----------------------|-----------------------|-----------------------|-----------------------|-----------------------|
| Facia Panel | | 40VPU054R7EQEE | 40VPU054R7EQEE | 40VPU054R7EQEE | 40VPU054R7EQEE | 40VPU054R7EQEE | 40VPU054R7EQEE |
| Indoor Unit Retail Price (Inc. Facia Panel) | | £908 | £929 | £954 | £1,010 | £1,036 | £1,082 |

| | | | | | | | |
|---------------------------------|-----------|------------------|------------------|------------------|------------------|------------------|------------------|
| Rated Cooling capacity | kW | 2.2 | 2.8 | 3.6 | 4.5 | 5.6 | 7.1 |
| Rated Heating capacity | kW | 2.5 | 3.2 | 4.0 | 5.0 | 6.3 | 8.0 |
| Sound pressure level(H/M/L) | dB(A) | 30/27/25 | 30/27/25 | 30/27/25 | 32/29/27 | 33/30/29 | 35/34/31 |
| Dimensions (HxWxD) indoor | mm | 183x840x840 | 183x840x840 | 183x840x840 | 183x840x840 | 183x840x840 | 204x840x840 |
| Dimensions (HxWxD) panel | mm | 50x950x950 | 50x950x950 | 50x950x950 | 50x950x950 | 50x950x950 | 50x950x950 |
| Weight indoor/panel | kg | 25/7 | 25/7 | 25/7 | 25/7 | 25/7 | 27/7 |
| Suggested Power supply | V-ph-Hz-A | 220/240-1-50 - 6 | 220/240-1-50 - 6 | 220/240-1-50 - 6 | 220/240-1-50 - 6 | 220/240-1-50 - 6 | 220/240-1-50 - 6 |
| Pipe Connections (Gas - Liquid) | inch | 3/8 - 1/4 | 3/8 - 1/4 | 1/2 - 1/4 | 1/2 - 1/4 | 1/2 - 1/4 | 5/8 - 3/8 |



Turn to the experts



VRF Indoor Units - Round Way Cassette (Continued)

| | | | | | | |
|---|--|-----------------|-----------------|-----------------|-----------------|-----------------|
| Indoor Unit | | 40VU028R-7E-QEE | 40VU030R-7E-QEE | 40VU038R-7E-QEE | 40VU048R-7E-QEE | 40VU054R-7E-QEE |
| Facia Panel | | 40VPU054R7EQEE | 40VPU054R7EQEE | 40VPU054R7EQEE | 40VPU054R7EQEE | 40VPU054R7EQEE |
| Indoor Unit Retail Price (Inc. Facia Panel) | | £1,163 | £1,275 | £1,275 | £1,326 | £1,500 |

| | | | | | | |
|---------------------------------|-----------|------------------|-------------------|-------------------|-------------------|-------------------|
| Rated Cooling capacity | kW | 8.0 | 9.0 | 11.2 | 14.0 | 16.0 |
| Rated Heating capacity | kW | 9.0 | 10.0 | 12.5 | 16.0 | 18.0 |
| Sound pressure level(H/M/L) | dB(A) | 37/35/31 | 37/35/31 | 37/35/31 | 44/40/36 | 44/40/36 |
| Dimensions (HxWxD) indoor | mm | 204x840x840 | 246x840x840 | 246x840x840 | 288x840x840 | 288x840x840 |
| Dimensions (HxWxD) panel | mm | 50x950x950 | 50x950x950 | 50x950x950 | 50x950x950 | 50x950x950 |
| Weight indoor/panel | kg | 27/7 | 31/7 | 31/7 | 33/7 | 33/7 |
| Suggested Power supply | V-ph-Hz-A | 220/240-1-50 - 6 | 220/240-1-50 - 10 | 220/240-1-50 - 10 | 220/240-1-50 - 10 | 220/240-1-50 - 10 |
| Pipe Connections (Gas - Liquid) | inch | 5/8 - 3/8 | 5/8 - 3/8 | 5/8 - 3/8 | 5/8 - 3/8 | 5/8 - 3/8 |



Turn to the experts



VRF Indoor Units - 2-Way Cassette

| Indoor Unit | 40VU0072-7G-QEE | 40VU0092-7G-QEE | 40VU0122-7G-QEE | 40VU0162-7G-QEE | 40VU0182-7G-QEE |
|--|-----------------------|-----------------------|-----------------------|-----------------------|-----------------------|
| Facia Panel | 40VPU01827GQEE | 40VPU01827GQEE | 40VPU01827GQEE | 40VPU01827GQEE | 40VPU01827GQEE |
| Indoor Unit Retail Price (Inc. Facia Panel) | £1,306 | £1,377 | £1,428 | £1,525 | £1,622 |

| | | | | | | |
|---------------------------------|-----------|------------------|------------------|------------------|------------------|------------------|
| Rated Cooling capacity | kW | 2.2 | 2.8 | 3.6 | 4.5 | 5.6 |
| Rated Heating capacity | kW | 2.5 | 3.2 | 4.0 | 5.0 | 6.3 |
| Sound pressure level(H/M/L) | dB(A) | 42/37/33 | 42/37/33 | 42/37/33 | 44/39/34 | 44/39/34 |
| Dimensions (HxWxD) indoor | mm | 220x817x620 | 220x817x620 | 220x817x620 | 220x817x620 | 220x817x620 |
| Dimensions (HxWxD) panel | mm | 68x1055x680 | 68x1055x680 | 68x1055x680 | 68x1055x680 | 68x1055x680 |
| Weight indoor/panel | kg | 21/7 | 21/7 | 21/7 | 21/7 | 21/7 |
| Suggested Power supply | V-ph-Hz-A | 220/240-1-50 - 6 | 220/240-1-50 - 6 | 220/240-1-50 - 6 | 220/240-1-50 - 6 | 220/240-1-50 - 6 |
| Pipe Connections (Gas - Liquid) | inch | 3/8 - 1/4 | 3/8 - 1/4 | 1/2 - 1/4 | 1/2 - 1/4 | 1/2 - 1/4 |



Turn to the experts



VRF Indoor Units - 1-Way Cassette

| Indoor Unit | | 40VU0051-7E-QEE | 40VU0071-7E-QEE | 40VU0091-7E-QEE | 40VU0121-7E-QEE |
|--|-----------|-----------------------|-----------------------|-----------------------|-----------------------|
| Facia Panel | | 40VPU01217EQEE | 40VPU01217EQEE | 40VPU01217EQEE | 40VPU01217EQEE |
| Indoor Unit Retail Price (Inc. Facia Panel) | | £1,133 | £1,173 | £1,214 | £1,245 |
| Rated Cooling capacity | kW | 1.5 | 2.2 | 2.8 | 3.6 |
| Rated Heating capacity | kW | 1.7 | 2.5 | 3.2 | 4.0 |
| Sound pressure level(H/M/L) | dB(A) | 32/29/24 | 32/29/24 | 32/29/24 | 34/30/25 |
| Dimensions (HxWxD) indoor | mm | 185x875x505 | 185x875x505 | 185x875x505 | 185x875x505 |
| Dimensions (HxWxD) panel | mm | 122x1050x560 | 122x1050x560 | 122x1050x560 | 122x1050x560 |
| Weight indoor/panel | kg | 15/3 | 15/3 | 15/3 | 15/3 |
| Suggested Power supply | V-ph-Hz-A | 220/240-1-50 - 6 | 220/240-1-50 - 6 | 220/240-1-50 - 6 | 220/240-1-50 - 6 |
| Pipe Connections (Gas - Liquid) | inch | 3/8 - 1/4 | 3/8 - 1/4 | 3/8 - 1/4 | 1/2 - 1/4 |



Turn to the experts



VRF Indoor Units - Slim Ducted

| Indoor Unit | | 40VD005L-7E-QEE | 40VD007L-7E-QEE | 40VD009L-7E-QEE | 40VD012L-7E-QEE | 40VD016L-7E-QEE | 40VD018L-7E-QEE | 40VD024L-7E-QEE |
|----------------------------------|--|-----------------|-----------------|-----------------|-----------------|-----------------|-----------------|-----------------|
| Indoor Unit Retail Price | | £801 | £832 | £852 | £873 | £893 | £934 | £1,010 |
| Panel model (Optional) | | 40VPD016L7EQEE | 40VPD016L7EQEE | 40VPD016L7EQEE | 40VPD016L7EQEE | 40VPD016L7EQEE | 40VPD024L7EQEE | 40VPD024L7EQEE |
| Panel Retail Price | | £169 | £169 | £169 | £169 | £169 | £199 | £199 |
| Retail Price (Inc. Panel) | | £970 | £1,001 | £1,021 | £1,042 | £1,062 | £1,133 | £1,209 |

| | | | | | | | | |
|---------------------------------|-----------|------------------|------------------|------------------|------------------|------------------|------------------|-------------------|
| Rated Cooling capacity | kW | 1.5 | 2.2 | 2.8 | 3.6 | 4.5 | 5.6 | 7.1 |
| Rated Heating capacity | kW | 1.7 | 2.5 | 3.2 | 4.0 | 5.0 | 6.3 | 8.0 |
| Sound pressure level (H/M/L) | dB(A) | 26/22/19 | 27/23/20 | 27/23/20 | 30/27/24 | 32/29/26 | 33/30/27 | 36/33/30 |
| Max external Static pressure | Pa | 30 | 30 | 30 | 30 | 30 | 30 | 30 |
| Dimensions (HxWxD) indoor | mm | 185x850x420 | 185x850x420 | 185x850x420 | 185x850x420 | 185x850x420 | 185x1170x420 | 185x1170x420 |
| Dimensions Outlet (HxWxD) panel | mm | 100x890x190 | 100x890x190 | 100x890x190 | 100x890x190 | 100x890x190 | 100x1210x190 | 100x1210x190 |
| Dimensions Inlet (HxWxD) panel | mm | 32.4x890x290.5 | 32.4x890x290.5 | 32.4x890x290.5 | 32.4x890x290.5 | 32.4x890x290.5 | 32.4x1210x290.5 | 32.4x1210x290.5 |
| Weight indoor/panel | kg | 17/4 | 18/4 | 18/4 | 18/4 | 19/4 | 23/5 | 24/5 |
| Suggested Power supply | V-ph-Hz-A | 220/240-1-50 - 6 | 220/240-1-50 - 6 | 220/240-1-50 - 6 | 220/240-1-50 - 6 | 220/240-1-50 - 6 | 220/240-1-50 - 6 | 220/240-1-50 - 10 |
| Pipe Connections (Gas - Liquid) | inch | 3/8 - 1/4 | 3/8 - 1/4 | 3/8 - 1/4 | 1/2 - 1/4 | 1/2 - 1/4 | 1/2 - 1/4 | 5/8 - 3/8 |



SLIM DUCTED



Turn to the experts



VRF Indoor Units - Standard Static Ducted

| Indoor Unit | | 40VD005S-7S-QEE | 40VD007S-7S-QEE | 40VD009S-7S-QEE | 40VD012S-7S-QEE | 40VD016S-7S-QEE | 40VD018S-7S-QEE |
|---------------------------------|-----------|-------------------|-------------------|-------------------|-------------------|-------------------|-------------------|
| Indoor Unit Retail Price | | £796 | £816 | £837 | £862 | £888 | £944 |
| Rated Cooling capacity | kW | 1.5 | 2.2 | 2.8 | 3.6 | 4.5 | 5.6 |
| Rated Heating capacity | kW | 1.7 | 2.5 | 3.2 | 4.0 | 5.0 | 6.3 |
| Sound pressure level (H/M/L) | dB(A) | 29/27/25 | 30/28/25 | 30/28/25 | 31/29/27 | 32/30/28 | 33/31/29 |
| Max external Static pressure | Pa | 200 | 200 | 200 | 200 | 200 | 200 |
| Dimensions (HxWxD) | mm | 248x700x700 | 248x700x700 | 248x700x700 | 248x700x700 | 248x700x700 | 248x1100x700 |
| Weight | kg | 27 | 27 | 27 | 27 | 29 | 29 |
| Suggested Power supply | V-ph-Hz-A | 220/240-1-50 - 10 | 220/240-1-50 - 10 | 220/240-1-50 - 10 | 220/240-1-50 - 10 | 220/240-1-50 - 10 | 220/240-1-50 - 16 |
| Pipe Connections (Gas - Liquid) | inch | 1/2 - 1/4 | 1/2 - 1/4 | 1/2 - 1/4 | 1/2 - 1/4 | 1/2 - 1/4 | 1/2 - 1/4 |



Turn to the experts

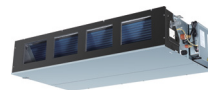


VRF Indoor Units - Standard Static Ducted (Continued)

| Indoor Unit | | 40VD024S-7S-QEE | 40VD028S-7S-QEE | 40VD030S-7S-QEE | 40VD038S-7S-QEE | 40VD048S-7S-QEE | 40VD054S-7S-QEE |
|---------------------------------|-----------|-------------------|-------------------|-------------------|-------------------|-------------------|-------------------|
| Indoor Unit Retail Price | | £985 | £1,128 | £1,235 | £1,342 | £1,434 | £1,520 |
| Rated Cooling capacity | kW | 7.1 | 8.0 | 9.0 | 11.2 | 14.0 | 16.0 |
| Rated Heating capacity | kW | 8.0 | 9.0 | 10.0 | 13.0 | 16.3 | 18.0 |
| Sound pressure level (H/M/L) | dB(A) | 34/31/29 | 35/33/30 | 36/33/30 | 38/35/32 | 40/36/32 | 42/38/34 |
| Max external Static pressure | Pa | 200 | 200 | 180 | 180 | 180 | 180 |
| Dimensions (HxWxD) | mm | 248x1100x700 | 248x1100x700 | 248x1100x700 | 248x1500x700 | 248x1500x700 | 248x1500x700 |
| Weight | kg | 37 | 37 | 39 | 48 | 51 | 51 |
| Suggested Power supply | V-ph-Hz-A | 220/240-1-50 - 16 | 220/240-1-50 - 16 | 220/240-1-50 - 16 | 220/240-1-50 - 16 | 220/240-1-50 - 16 | 220/240-1-50 - 16 |
| Pipe Connections (Gas - Liquid) | inch | 5/8 - 3/8 | 5/8 - 3/8 | 5/8 - 3/8 | 5/8 - 3/8 | 5/8 - 3/8 | 5/8 - 3/8 |



Turn to the experts

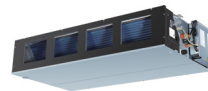


VRF Indoor Units - High Static Ducted

| Indoor Unit | | 40VD007H-7S-QEE | 40VD009H-7S-QEE | 40VD012H-7S-QEE | 40VD015H-7S-QEE | 40VD018H-7S-QEE | 40VD024H-7S-QEE | 40VD028H-7S-QEE |
|---------------------------------|-----------|-------------------|-------------------|-------------------|-------------------|-------------------|-------------------|-------------------|
| Indoor Unit Retail Price | | £1,194 | £1,224 | £1,235 | £1,260 | £1,347 | £1,413 | £1,469 |
| Rated Cooling capacity | kW | 2.2 | 2.8 | 3.6 | 4.5 | 5.6 | 7.1 | 8.0 |
| Rated Heating capacity | kW | 2.5 | 3.2 | 4.0 | 5.0 | 6.3 | 8.0 | 9.0 |
| Sound pressure level (H/M/L) | dB(A) | 30/25/23 | 30/25/23 | 32/29/26 | 32/29/26 | 32/29/26 | 33/29/25 | 33/29/25 |
| Max external Static pressure | Pa | 200 | 200 | 200 | 200 | 200 | 200 | 200 |
| Dimensions (HxWxD) | mm | 280x750x635 | 280x750x635 | 280x750x635 | 280x750x635 | 280x750x635 | 280x950x635 | 280x950x635 |
| Weight | kg | 29 | 29 | 29 | 29 | 29 | 34 | 34 |
| Suggested Power supply | V-ph-Hz-A | 220/240-1-50 - 10 | 220/240-1-50 - 10 | 220/240-1-50 - 16 | 220/240-1-50 - 16 | 220/240-1-50 - 16 | 220/240-1-50 - 16 | 220/240-1-50 - 16 |
| Pipe Connections (Gas - Liquid) | inch | 3/8 - 1/4 | 3/8 - 1/4 | 1/2 - 1/4 | 1/2 - 1/4 | 1/2 - 1/4 | 5/8 - 3/8 | 5/8 - 3/8 |



Turn to the experts



VRF Indoor Units - High Static Ducted (Continued)

| Indoor Unit | | 40VD030H-7S-QEE | 40VD036H-7S-QEE | 40VD048H-7S-QEE | 40VD054H-7S-QEE | 40VD072H-7S-QEE | 40VD096H-7S-QEE |
|---------------------------------|-----------|-------------------|-------------------|-------------------|-------------------|-------------------|-------------------|
| Indoor Unit Retail Price | | £1,663 | £1,704 | £1,877 | £1,928 | £2,902 | £3,066 |
| Rated Cooling capacity | kW | 9.0 | 11.2 | 14.0 | 16.0 | 22.4 | 28.0 |
| Rated Heating capacity | kW | 10.0 | 12.5 | 16.0 | 18.0 | 25.0 | 31.0 |
| Sound pressure level (H/M/L) | dB(A) | 33/29/25 | 38/36/30 | 40/34/29 | 40/34/29 | 55/51/47 | 62/58/54 |
| Max external Static pressure | Pa | 200 | 200 | 200 | 200 | 250 | 250 |
| Dimensions (HxWxD) | mm | 280x950x635 | 280x1370x740 | 280x1370x740 | 280x1370x740 | 500x1330x895 | 500x1330x895 |
| Weight | kg | 34 | 54 | 54 | 54 | 103 | 103 |
| Suggested Power supply | V-ph-Hz-A | 220/240-1-50 - 16 | 220/240-1-50 - 16 | 220/240-1-50 - 16 | 220/240-1-50 - 16 | 220/240-1-50 - 16 | 220/240-1-50 - 20 |
| Pipe Connections (Gas - Liquid) | inch | 5/8 - 3/8 | 5/8 - 3/8 | 5/8 - 3/8 | 5/8 - 3/8 | 7/8 - 1/2 | 7/8 - 1/2 |



Turn to the experts



VRF Indoor Units - Flex Ceiling-Floor

| Indoor Unit | | 40VC009F-7S-QEE | 40VC012F-7S-QEE | 40VC016F-7S-QEE | 40VC018F-7S-QEE | 40VC024F-7S-QEE |
|---------------------------------|-----------|------------------|------------------|------------------|------------------|------------------|
| Indoor Unit Retail Price | | £1,168 | £1,184 | £1,230 | £1,362 | £1,444 |
| Rated Cooling capacity | kW | 2.8 | 3.6 | 4.5 | 5.6 | 7.1 |
| Rated Heating capacity | kW | 3.2 | 4.0 | 5.0 | 6.3 | 8.0 |
| Sound pressure level(H/M/L) | dB(A) | 38/36/34 | 38/36/34 | 42/38/35 | 42/38/35 | 46/44/41 |
| Dimensions (HxWxD) | mm | 680x1000x230 | 680x1000x230 | 680x1000x230 | 680x1000x230 | 680x1330x230 |
| Weight | kg | 28 | 28 | 28 | 28 | 36 |
| Suggested Power supply | V-ph-Hz-A | 220/240-1-50 - 6 | 220/240-1-50 - 6 | 220/240-1-50 - 6 | 220/240-1-50 - 6 | 220/240-1-50 - 6 |
| Pipe Connections (Gas - Liquid) | inch | 3/8 - 1/4 | 1/2 - 1/4 | 1/2 - 1/4 | 1/2 - 1/4 | 5/8 - 3/8 |



Turn to the experts



VRF Indoor Units - Flex Ceiling-Floor (Continued)

| Indoor Unit | | 40VC028F-7S-QEE | 40VC030F-7S-QEE | 40VC038F-7S-QEE | 40VC048F-7S-QEE | 40VC054F-7S-QEE |
|---------------------------------|-----------|------------------|------------------|------------------|------------------|------------------|
| Indoor Unit Retail Price | | £1,454 | £1,464 | £1,561 | £1,592 | £1,694 |
| Rated Cooling capacity | kW | 8.0 | 9.0 | 11.2 | 14.0 | 16.0 |
| Rated Heating capacity | kW | 9.0 | 10.0 | 12.5 | 16.0 | 18.0 |
| Sound pressure level(H/M/L) | dB(A) | 47/44/41 | 47/44/41 | 50/46/43 | 50/46/43 | 50/46/43 |
| Dimensions (HxWxD) | mm | 680x1330x230 | 680x1330x230 | 680x1650x230 | 680x1650x230 | 680x1650x230 |
| Weight | kg | 36 | 36 | 44 | 44 | 44 |
| Suggested Power supply | V-ph-Hz-A | 220/240-1-50 - 6 | 220/240-1-50 - 6 | 220/240-1-50 - 6 | 220/240-1-50 - 6 | 220/240-1-50 - 6 |
| Pipe Connections (Gas - Liquid) | inch | 5/8 - 3/8 | 5/8 - 3/8 | 5/8 - 3/8 | 5/8 - 3/8 | 5/8 - 3/8 |



Turn to the experts



VRF Indoor Units - Two-Way Console

| Indoor Unit | | 40VL005B-7E-QEE | 40VL007B-7E-QEE | 40VL009B-7E-QEE | 40VL012B-7E-QEE | 40VL018B-7E-QEE |
|---------------------------------|-----------|------------------|------------------|------------------|------------------|------------------|
| Indoor Unit Retail Price | | £939 | £1,158 | £1,250 | £1,337 | £1,484 |
| Rated Cooling capacity | kW | 1.5 | 2.2 | 2.8 | 3.6 | 5.0 |
| Rated Heating capacity | kW | 1.7 | 2.6 | 3.2 | 4.0 | 5.5 |
| Sound pressure level (H/M/L) | dB(A) | 45/38/30 | 45/38/30 | 45/38/30 | 47/40/30 | 47/40/30 |
| Dimensions (HxWxD) | mm | 600x700x210 | 600x700x210 | 600x700x210 | 600x700x210 | 600x700x210 |
| Weight | kg | 15 | 15 | 15 | 15 | 15 |
| Suggested Power supply | V-ph-Hz-A | 220/240-1-50 - 6 | 220/240-1-50 - 6 | 220/240-1-50 - 6 | 220/240-1-50 - 6 | 220/240-1-50 - 6 |
| Pipe Connections (Gas - Liquid) | inch | 1/2 - 1/4 | 1/2 - 1/4 | 1/2 - 1/4 | 1/2 - 1/4 | 1/2 - 1/4 |



Turn to the experts



VRF Indoor Units - Console Recessed

| Indoor Unit | | 40VL007R-7G-QEE | 40VL009R-7G-QEE | 40VL012R-7G-QEE |
|---------------------------------|-----------|-------------------|-------------------|-------------------|
| Indoor Unit Retail Price | | £1,010 | £1,061 | £1,102 |
| Rated Cooling capacity | kW | 2.2 | 2.8 | 3.6 |
| Rated Heating capacity | kW | 2.5 | 3.2 | 4.0 |
| Sound pressure level (H/M/L) | dB(A) | 38/35/33 | 38/35/33 | 40/37/35 |
| Max external Static pressure | Pa | 30 | 30 | 30 |
| Dimensions (HxWxD) | mm | 624x1116x221 | 624x1116x221 | 624x1116x221 |
| Weight | kg | 29 | 29 | 29 |
| Suggested Power supply | V-ph-Hz-A | 220/240-1-50 - 10 | 220/240-1-50 - 10 | 220/240-1-50 - 10 |
| Pipe Connections (Gas - Liquid) | inch | 3/8 - 1/4 | 3/8 - 1/4 | 1/2 - 1/4 |



Turn to the experts

ACCESSORIES

Accessories

| | Model | Description | Price |
|----------------------------------|--------------|---|---------|
| Wireless Controllers & Receivers | | | |
| Wireless Controllers & Receivers | 40VCI67FQEE | Wireless controller | £36 |
| | 40VCIR7FQEE | Wireless controller receiver (ducts) | £33 |
| Wired Controllers | | | |
| Wired Controllers | 40VCW117FQEE | Simple wired controller | £108 |
| | 40VCW217FQEE | Wired controller | £77 |
| | 40VCW317FQEE | Scheduling wired controller | £204 |
| Central Controllers | | | |
| Central Controllers | 40VCC317FQEE | Group controller | £317 |
| | 40VCC617FQEE | Central Touchscreen controller 256 IDU | £1,291 |
| | 40VCC617FQEE | Multi Language Central Touchscreen controller 256 IDU | £1,291 |
| | 40VCC837FQEE | Group Controller up to 64 IDU | £633 |
| BMS, Gateways and Adapters | | | |
| BMS, Gateways and Adapters | 40VCB217FQEE | Local BMS remote monitoring | £11,394 |
| | 40VCBB17FQEE | BMS control-BACnet gateway | £4,233 |
| | 40VCBL17FQEE | BMS control-Lonworks gateway | £2,576 |



Turn to the experts

ACCESSORIES

Accessories (Continued)

| | Model | Description | Price |
|---|----------------|--|---------|
| BMS, Gateways and Adapters | | | |
| BMS, Gateways and Adapters (Continued) | 40VCBK17FQEE | BMS control - KNX gateway up to 8 IDU | £5,896 |
| | 40VCBK27FQEE | BMS control - KNX gateway up to 16 IDU | £8,609 |
| | 40VCBK37FQEE | BMS control - KNX gateway up to 64 IDU | £16,560 |
| | 40VCCR17FQEE | Protocol adapter | £291 |
| | 40VCB117FQEE | Local BMS Control | £689 |
| | 40VCBM17FQEE | Protocol & electricity data collection adapter | £317 |
| | 40VCCX17FQEE | Protocol adapter (128 IDU) - for touchscreen 512 IDU | £791 |
| | 40VCC727FQEE | Central controller Touch Screen - 512 IDU with Web browser & Multilanguage | £7,283 |
| Branch Kits | | | |
| Branch Kits | 40VJ012M7-HQEE | Branch Kit <33.5kW (For 2-pipe HP system) | £92 |
| | 40VJ018M7-HQEE | Branch Kit < 33.5-50.6kW> (for 2-pipe HP system) | £105 |
| | 40VJ026M7-HQEE | Branch Kit < 50.6-73kW> (for 2-pipe HP system) | £130 |
| | 40VJ048M7-HQEE | Branch Kit < 73-135kW > (for 2-pipe HP system) | £200 |
| | 40VJ072M7-HQEE | Branch Kit < 135- 204kW> (for 2-pipe HP system) | £306 |
| | 40VJ052G7-HQEE | ODU branch connection (for 2 pipe heat pump system, 2 ODU) | £146 |



Turn to the experts

ACCESSORIES

Accessories (Continued)

| | Model | Description | Price |
|-------------------------|----------------|--|-------|
| Branch Kits | | | |
| Branch Kits (Continued) | 40VJ078G7-HQEE | ODU branch connection (for 2 pipe heat pump system, 3 ODU) | £326 |
| | 40VJ044G7-RQEE | Outdoor branch connection (for 3 pipe system, 2 ODU) | £217 |
| | 40VJ066G7-RQEE | Outdoor branch connection (for 3 pipe system, 3 ODU) | £513 |
| | 40VJ088G7-RQEE | Outdoor branch connection (for 3 pipe system, 4 ODU) | £883 |
| | 40VJ012M7-RQEE | Branch Kit <33.5kW (for 3-pipe system) | £196 |
| | 40VJ018M7-RQEE | Branch Kit< 33.5-50.6kW> (for 3-pipe system) | £204 |
| | 40VJ026M7-RQEE | Branch Kit < 50.6-73kW> (for 3-pipe system) | £246 |
| | 40VJ048M7-RQEE | Branch Kit < 73-135kW > (for 3-pipe system) | £380 |
| | 40VJ072M7-RQEE | Branch Kit < 135- 204kW> (for 3-pipe system) | £672 |
| Facia Panels | | | |
| Facia Panels | 40VPU054R7EQEE | Round-way Cassette Panel - standard | £271 |
| | 40VPU054A7EQEE | Round-way Cassette Panel with presence sensor | £516 |
| | 40VPU018C7SQEE | Compact 4 -Way - Panel | £245 |
| | 40VPU01827GQEE | 2 Way Cassette - Panel | £444 |
| | 40VPU01217EQEE | One-Way Cassette Panel | £322 |



Turn to the experts

ACCESSORIES

Accessories (Continued)

| | Model | Description | Price |
|--------------------------|----------------|---------------------------------|-------|
| Facia Panels | | | |
| Facia Panels (Continued) | 40VPD016L7EQEE | Slim duct - DC panel up to 16k | £169 |
| | 40VPD024L7EQEE | Slim duct - DC panel 18 to 24k | £199 |
| Filters | | | |
| Filters | 40VFC018F7-QEE | PM2.5 filter Flex Ceiling floor | £11 |
| | 40VFC054F7-QEE | PM2.5 filter Flex Ceiling floor | £11 |
| | 40VFK030S7-QEE | PM2.5 3M filter Highwall | £46 |
| Service Tools | | | |
| Service Tools | 40VCTOOLQEE | Carrier Service Monitoring tool | £276 |



Turn to the experts

UK Headquarters
Toshiba Carrier UK Limited
Elite House,
Guildford Road,
Leatherhead,
Surrey
KT22 9UT

Tel: 0330 236 8630
marketing.uk@toshiba-ac.com

Plymouth
Toshiba Carrier UK Limited
Porsham Close,
Belliver Industrial Estate,
Plymouth,
Devon
PL6 7DB

Tel: 0330 236 8630
sales.support@toshiba-ac.com

Manchester
Toshiba Carrier UK Limited
Unit 15 S:Park Business Park
Hamilton Road,
Stockport,
Greater Manchester
SK1 2AE

Tel: 0330 236 8630
orders@toshiba-ac.com

www.carrier.com

05/2024 UK&I

Carrier is committed to continuously improving its products to ensure the highest quality and reliability standards, and to meet local regulations and market requirements. All features and specifications are subject to change without prior notice.

©2024 Carrier. All Rights Reserved.