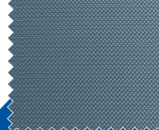
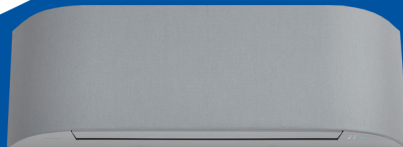
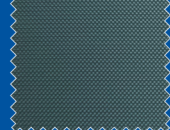


## Toshiba Air Conditioning Air Conditioner Split Type Inverter

RAS-B16N4KVRG-E



Bluish Grey



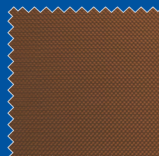
Dark Grey



Light Grey



Grey Beige



Dark Brown



Emerald Blue

Model Reference			RAS-B16N4KVRG-E
Nominal	Cooling Capacity	kW	4.6
	Heating Capacity	kW	5.5
	EER/COP	W/W	3.41/3.62
UK	Cooling Total / Sensible	kW	4.49/3.42
	Heating	kW	3.37
Cooling EN14825	Range Min-Max	kW	1.20 - 5.30
	Power Input	kW	1.35
	Pdesign	kW	4.6
	SEER/Energy Efficiency Class		7.80/A++
	Seasonal Energy Consumption	kWh/a	206
Heating EN14825	Range Min-Max	kW	1.10 - 6.30
	Power Input	kW	1.52
	Pdesign	kW	4.0
	SCOP/Energy Efficiency Class		4.60/A++
	Seasonal Energy Consumption	kWh/a	1214
Airflow	High - Medium - Low	l/s	186 - 83
	High - Medium - Low	m3/h	730 - 340
Sound	Pressure: High - Medium - Low	dB(A)	45 - 22
	Power: High - Medium - Low	dB(A)	59 - 37
Dimensions	Height x Width x Depth	mm	300x987x210
	Weight	kg	12
Pipe Connection	Flare Connections (gas - liquid)	inch	1/2 - 1/4
	Drain Pipe Connection Upper - lower	mm	16/14
Remote Controller		Wireless	WH-UA01UE
Power Cable	Outdoor to Indoor		3 core + earth

# TOSHIBA

### Features:

- Decorative fabrics (optional colours)
- Magic coil dustless heat-exchanger
- Luxury remote control
- Ultra-pure Filter
- Plasma Ionizer
- HADA Care Flow
- Heating only compatibility
- Wireless adapter built-in
- Smart speaker Google assistant and
- Alexa Amazon compatible

[www.cdlweb.info](http://www.cdlweb.info)

## 4-1. Indoor Unit

