



Raising the standards in Air Conditioning Distribution

Toshiba Air Conditioning Luxury RAS Wall Mount – Fabric Guide

HAORI Wall Unit



Let your style be your guide

Fabrics with infinite possibilities
Easy to dress, just peel and stick.



Bluish Grey



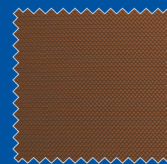
Dark Grey



Light Grey



Grey Beige



Dark Brown



Emerald Blue

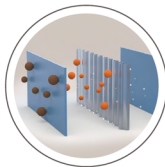
A+++
in cooling
and heating

Ultra-quiet system
Less than
19 dB(A)

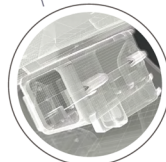
Silent operation
Down to
37 dB(A)

TOSHIBA

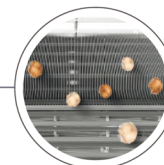
TOSHIBA
ULTRA PURE FILTER
Toshiba ultra pure filter captures
up to 94% of PM 2.5



TOSHIBA
PLASMA IONISER
Catches & neutralizes
the contaminated particles



TOSHIBA
MAGIC COIL
Always as clean as new



www.cdlweb.info

UK capacities are based on the following conditions: Cooling: Indoor 23°C DB/16°C WB ~ Outdoor 29°C DB Heating: Indoor 20°C DB ~ Outdoor -5°C/100% RH Nominal capacities are based on NEMA Cooling: Indoor 27°C DB/19°C WB ~ Outdoor 35°C DB Heating: Indoor 20°C DB ~ Outdoor 7°C/100% RH 7.5m Pipe Run and High Speed. Data from Toshiba Air Conditioning July 2019

Instructions to change wall unit cover.

1. Remove air inlet grille
2. Prepare fabric to be used as per template - See Page 2.
3. Insert fabric to left and right of grille. Attach and hook the loop of Velcro.
4. Insert fabric top and bottom of grille and loop Velcro
5. Attach grille in reverse of step 1
6. Note the tightness of the fabric depends on attaching the hook and loop of Velcro
7. Note ensure system is OFF before removing front grille
8. Vacuum clean

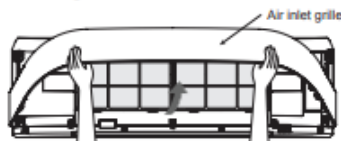
20 DECORATIVE FABRIC INSTALLATION

The decorative fabric for cover on the air inlet grille of indoor unit was put in the accessories. User can use it as required.

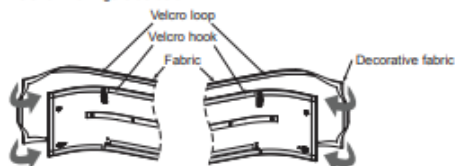
The method of installation is as follows.

1. Remove the air inlet grille.

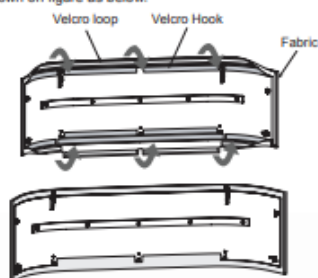
Open the air inlet grille upward and pull it toward you.
As shown on figure as below.



2. Prepare the fabric that you choose for install.
3. Insert the fabric into the left and right side of the air inlet grille.
Attach the hook and loop of velcro tape fully together.
As shown on figure as below.



4. Insert the fabric into the top and bottom side of the air inlet grille.
Attach the hook and loop of velcro tape fully together.
As shown on figure as below.



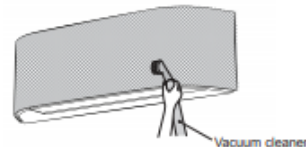
5. Reassembly the air inlet grille by reverse process of 1.

Note:

- The lightness of the fabric depends on attaching the hook and loop of velcro around the air inlet grille, take appropriate action.

Maintenance & Shelf-life

- Clean when dust stuck or covers the decorative fabric.
- Take extra care when cleaning the decorative fabric.
- Vacuum the decorative fabric with soft brush nozzle that use for cleaning on furniture or curtain.



- In case of getting heavy dirty on decorative fabric, please use dry cleaning service or wash by hand with warm water separated from other clothes (to avoid color staining), then line dry in the shade.

Note:

- Switch "OFF" and unplug the air conditioner before removing the air inlet grille and decorative fabric.
- Ensure decorative fabric are completely dry before refitting to the air inlet grille.
- Do not put the decorative fabric in a dishwasher, washing machine, tumble dryer, oven, microwave or near an open flame.

CAUTION

- If clean decorative fabric by washing, it may affect to appearance and fitting of the decorative fabric.
- Recommend to use vacuum cleaner to removing the dusts from decorative fabric.

