

A1 - A3	MODULE MAITRE A MICROPROCESSEUR	A1 - A3	MICROPROCESSOR-BASED MASTER MODULE	A1 - A3	HAUPTMODUL
A2	AFFICHEUR	A2	DISPLAY	A2	BEDIENUNGS- UND ANZEIGE-MODUL
A148	PASSERELLE CCN-JBUS	A148	J-BUS BOARD	A148	J-BUS SCHNITTSTELLE RS232/RS485
BP1	TRANSDUCTEUR DE PRESSION REFOULEMENT	BP1	DISCHARGE PRESSURE TRANSDUCER	BP1	MESSWANDLER VERDICHUNGSDRUCK
BP3	TRANSDUCTEUR DE PRESSION ASPIRATION	BP3	SUCTION PRESSURE TRANSDUCER	BP3	MESSWANDLER SAUGDRUCK
BP81	TRANSDUCTEUR DE PRESSION ECONOMISEUR	BP81	ECONOMISOR PRESSURE TRANSDUCER	BP81	ECONOMIZER MESSWANDLER
BP90	TRANSDUCTEUR DE PRESSION POMPE HYDRAU	BP90	WATER PUMP PRESSURE TRANSDUCER	BP90	DRUCKMESSWANDLER ULIKPUMPE
EC1 - EC2	COMPRESSEUR	EC1 - EC2	COMPRESSOR	EC1-EC2	VERDICHTER
ED1	DETENDEUR	ED1	EXPANSION VALVE	ED1	ELEKTRONISHES EXPANSIONSVENTIL
ED81	DETENDEUR ELECTRONIQUE ECONOMISEUR	ED81	EXPANSION VALVE ECONOMIZER	ED81	EXV ECONOMIZER
EH41	RECHAUFFEUR EVAPORATEUR	EH41	EVAPORATOR HEATER	EH41	VERDAMPFERHEIZUNG
EH90	RECHAUFFEUR CIRCUIT D'EAU EVAPORATEUR	EH90	EVAPORATOR WATER CIRCUIT HEATING ELEMENT	EH90	HEIZUNG IM VERDAMPFER-WASSERKREISLAUF
EH141 - EH142	RECHAUFFEUR ANTI FORMATION DE GLACE	EH141 - EH142	COIL HEATER	EH141-EH142	FROSTSCHUTZ HEIZUNG
EH1C - EH2C	RECHAUFFEUR CARTER COMPRESSEUR	EH1C-EH2C	COMPRESSOR HEATER	EH1C-EH2C	KURBELWANNENHEIZUNG VERDICHTER
EP90	POMPE A EAU	EP90	WATER PUMP	EP90	WASSER PUMPE
EV11 - EV13	VENTILATEUR CONDENSEUR	EV11 - EV13	CONDENSER FAN	EV11 - EV13	VERFLUESSIGERVENTILATOR
EV100	VENTILATEUR COFFRET ELECTRIQUE	EV100	ELECTRICAL BOX FAN	EV100	SCHALTSCHRANK VENTILATOR
FT1 - FT2	SONDE DE TEMPERATURE MOTEUR COMPRESSEUR	FT1 - FT2	COMPRESSOR MOTOR TEMPERATURE SENSOR	FT1 - FT2	TEMPERATURFUEHLER VERDICHTER-MOTORWICKLUNG
FU - FUA	PROTECTION CIRCUIT CONTROLE	FU - FUA	CONTROL FUSE PROTECTION	FU - FUA	SCHMELZBARER SCHUTZ KONTROLLIERT
FU1 - FU2	PROTECTION CIRCUIT COMPRESSEUR	FU1-FU2	COMPRESSOR CIRCUIT PROTECTION	FU1-FU2	SCHUTZSCHALTER VERDICHTER
GS1 - GS2	DEMARREUR COURANT REDUIT COMPRESSEUR	GS1-GS2	SOFT START DEVICE, COMPRESSOR	GS1-GS2	SANFTANLAUFREGLER, VERDICHTER
GS90	VARIATEUR DE VITESSE MOTEUR POMPE	GS90	PUMP MOTOR VARIABLE SPEED	GS90	SCHMELZBARER SCHUTZ KONTROLLIERT
K41	RELAIS COMMANDE RECHAUFFEUR	K41	HEATER RELAY	K41	STEUERRELAIS HEIZUNG
KM1 - KM2	CONTACTEUR COMPRESSEUR	KM1 - KM2	CONTACTOR COMPRESSOR	KM1-KM2	SCHUETZ VERDICHTER
KM11..KM14	CONTACTEUR VENTILATEUR CONDENSEUR	KM11..KM14	CONDENSER FAN CONTACTOR	KM11..KM14	SCHUETZ VERFLUESSIGERVENTILATOR
QF41	DISJONCTEUR CIRCUIT RECHAUFFEURS	QF41	CIRCUIT BREAKER, HEATER CIRCUIT	QF41	SCHUTZSCHALTER, STEUERSTROMKREIS
QM11-QM13	PROTECTION CIRCUIT VENTILATEURS	QM11-QM13	VENTILATOR CIRCUIT PROTECTION	QM11-QM13	SCHUTZSCALTER VERFLUESSIGERVENTILATOR
QM90	PROTECTION CIRCUIT POMPES	QM90	WATER PUMP CIRCUIT PROTECTION	QM90	SCHUTZSHALTER KALTWASSERPUMPE
QS100	INTERRUPTEUR GENERAL	QS100	GENERAL DISCONNECT SWITCH	QS100	HAUPT-TRENNSCHALTER
RT1	SONDE DE TEMPERATURE SORTIE EAU EVAPORATEUR	RT1	EVAPORATOR LEAVING WATER TEMPERATURE SENSOR	RT1	TEMPERATURFUEHLER VERDAMPFER-KALTWASSER-AUSTRITT
RT2	SONDE DE TEMPERATURE ENTREE EAU EVAPORATEUR	RT2	EVAPORATOR ENTERING WATER TEMPERATURE SENSOR	RT2	TEMPERATURFUEHLER VERDAMPFER-KALTWASSER-EINTRITT
RT10	SONDE DE TEMPERATURE AIR AMBIANT OU EXTERIEUR	RT10	AMBIENT OR OUTSIDE AIR TEMPERATURE SENSOR	RT10	UMGEBUNGS- ODER AUSSENLUFT- TEMPERATURFUEHLER
RT11-RT12	SONDE DE DEGIVRAGE	RT11-RT12	DEFROST TEMPERATURE SENSOR	RT11-RT12	FUEHLER ABTAUUNG
RT31	SONDE DE TEMPERATURE ASPIRATION	RT31	SUCTION TEMPERATURE SENSOR	RT31	TEMPERATUR SENSOR SAUGASS
RT81	SONDE DE TEMPERATURE ECONOMISEUR	RT81	ECONOMISER TEMPERATURE SENSOR	RT81	ECONOMISER-TEMPERATURFUEHLER
RT100	SONDE DE TEMPERATURE SORTIE EAU COMMUNE EVAPORATEUR (MAITRE-SUIVEUR)	RT100	EVAPORATOR COMMUN LEAVING WATER TEMPERATURE SENSOR (LEAD-LAG)	RT100	FUEHLER GEMEINSAME KALTWASSERAUSTRITTS-TEMPERATUR (LEAD-LAG)
SP90F	DETECTEUR DEBIT D'EAU POMPE EVAPORATEUR	SP90F	EVAPORATOR PUMP FLOW SWITCH	SP90F	STROEMUNGSWAECHTER KALTWASSER
SP1F	PRESSOSTAT HAUTE PRESSION DE SECURITE	SP1F	HIGH PRESSURE SAFETY SWITCH	SP1F	HOCHDRUCK-SICHERHEITS-SCHALTER
ST100	THERMOSTAT DE REGULATION VENTILATION COFFRET ELECTRIQUE	ST100	ELECTRICAL BOX FAN CONTROL THERMOSTAT	ST100	REGELTHERMOSTAT FUER SCHALTSCHRANKVENTILATOR
TC	TRANSFORMATEUR CIRCUIT CONTROLE	TC	CONTROL CIRCUIT TRANSFORMER	TC	TRANSFORMATOR STEUERSTROMKREIS
TC90	TRANSFORMATEUR PUISSANCE POMPE	TC90	PUMP POWER CIRCUIT TRANSFORMER	TC90	TRANSFORMATOR
YV41	VANNE D'INVERSION DE CYCLE	YV41	CIRCUIT CYCLE REVERSAL VALVE	YV41	KREISLAUF UMKEHRVENTIL
YV81 - YV82	VANNE ECONOMISEUR COMPRESSEUR	YV81 - YV82	ECONOMIZER VALVE	YV81-YV82	ECONOMIZER-VENTIL

SCHEMA SIMPLIFIE  
SIMPLIFIED WIRING  
VEREINFACHTES SCHEMA

SEMPLIFICATI COLLEGAMENTI  
SIMPLIFICADO CABLEDO

TD 070 -> 300



04/05/2017

1

00DCG000258200

A

A1 - A3 MODULO PRINCIPALE A MICROPROCESSORE  
 A2 DISPLAY  
 A148 CHEDA CCN-J BUS  
 BP1 TRASDUTTORE DELLA PRESSIONE DI MANDATA  
 BP3 TRASDUTTORE DELLA PRESSIONE DI ASPIRAZIONE  
 BP81 TRASDUTTORE PRESSIONE ECONOMIZZATORE  
 BP90 TRASDUTTORE PRESSIONE USCITA ACQUA POMPA  
 EC1-EC2 COMPRESSORE  
 ED1 VALVOLA ELETTRONICA DESPANSIONE  
 ED81 VALVOLA DI ESPANSIONE ELETTRONICA ECONOMIZZATORE  
 EH41 ELETTORISCALDATORE DELL'EVAPORATORE  
 EH90 RISCALDATORE CIRCUITO ACQUA  
 EH141-EH142 RISCALDATORE BATTERIA  
 EH1C-EH2C RISCALDATORE CARTER COMPRESSORE  
 EP90 POMPA ACQUA  
 EV11-EV13 VENTILATORE DEL CONDENSATORE  
 EV100 VENTILATORE DEL QUADRO ELETTRICO  
 FT1 - FT2 SENSORE DI TEMPERATURA MOTORE DEL COMPRESSORE  
 FU - FUA PROTEZIONE CIRCUITO CONTROLLA  
 FU1-FU2 MAGNETOTERMICO CIRCUITO AUSILIARIO  
 GS1-GS2 AVVIAMENTO A CORRENTE RIDOTTA, COMPRESSORE  
 GS90 VARIATORE DI VELOCITA DEL MOTORE POMPA  
 K41 RELE COMANDA RADIATORE  
 KM1-KM2 TELERUTTORE, COMPRESSORE  
 KM11-KM14 TELERUTTORE DEL VENTILATORE DEL CONDENSATORE  
 QF41 MAGNETOTERMICO RESISTENZA  
 QM11-QM13 MAGNETOTERMICO DEL VENTILATORE DEL CONDENSATORE  
 QM90 MAGNETOTERMICO DEL VENTILATORE DELLA POMPA ACQUA AVAPORATORE  
 QS100 SEZIONATORE GENERALE  
 RT1 SONDA DI TEMPERATURA ACQUA USCITA EVAPORATORE  
 RT2 SONDA DI TEMPERATURA ACQUA ENTRATA EVAPORATORE  
 RT10 SONDA TEMPERATURA ESTERNA O AMBIENTE  
 RT11-RT12 SONDA DI SBRINAMENTO  
 RT31 SENSORE AWOOLGIMENTI MOTORE COMPRESSORE  
 RT81 SONDA TEMPERATURA ECONOMIZZATORE  
 RT100 SENSORE ACQUA IN USCITA COMUNE (MASTER/SLAVE)  
 SP90F FLUSSOSTATO POMPA EVAPORATORE  
 SP1F PRESSOSTATO DI ALTAX  
 ST100 TERMOSTATO DI REGOLAZIONE VENTILATORE QUADRO ELETTRICO  
 TC TRASFORMATORE DEL CIRCUITO DI CONTROLLO  
 TC90 TRASFORMATORE DEL POMPA  
 YV41 VALVOLA D'INVERSIONE  
 YV81-YV82 VALVOLA ECONOMIZZATORE

A1 - A3 MODULO PRINCIPAL BASADO EN MICROPROCESADOR  
 A2 PANTALLA  
 A148 TARJETA J BUS  
 BP1 TRANSDUCTOR DE PRESION DE DESCARGA  
 BP3 TRANSDUCTOR DE PRESION DE ASPIRACION  
 BP81 TRANSDUCTOR DE PRESION DEL ECONOMIZADOR  
 BP90 TRANSDUCTOR DE PRESION BOMBEA HIDRAULICA  
 EC1-EC2 COMPRESOR  
 ED1 VALVULA DE EXPANSION ELECTRONICA  
 ED81 VALVULA DE EXPANSION ELECTRONICA ECONOMIZADOR  
 EH41 CALENTADOR DEL EVAPORADOR  
 EH90 CALENTADOR DEL CIRCUITO DE AGUA DEL EVAPORADOR  
 EH141-EH142 CALENTADOR DE LA BATERIA  
 EH1C-EH2C CALENTADOR DE CARTER DEL COMPRESOR  
 EP90 BOMBA DE AGUA  
 EV11-EV13 VENTILADOR DEL CONDENSADOR  
 EV100 VENTILADOR DEL CUADRO ELCTRICO  
 FT1 - FT2 SENSOR DE TEMPERATURA DEL MOTOR DEL COMPRESOR  
 FU - FUA PROTECCION CIRCUITO CONTROLLA  
 FU1-FU2 INTERRUPTOR DEL COMPRESOR  
 GS1-GS2 DISPOSITIVO DE ARRANQUE A TENSION REDUCIDA, COMPRESOR  
 GS90 VARIADOR DE VELOCIDAD DEL MOTOR DEL BOMBA  
 K41 ENLACE ENCARGA CALENTADOR  
 KM1-KM2 CONTACTOR, COMPRESOR  
 KM11-KM14 CONTACTOR DEL VENTILADOR DEL CONDENSADOR  
 QF41 INTERRUPTOR DE PROTECCIONE  
 QM11-QM13 INTERRUPTOR DE PROTECCION  
 QM90 INTERRUPTOR DE LA BOMBA DE AGUA DEL EVAPORADOR  
 QS100 INTERRUPTOR GENERAL  
 RT1 SONDA DE TEMPERATURA DE SALIDA DEL AGUA DEL EVAPORADOR  
 RT2 SONDA DE TEMPERATURA DE ENTRADA DEL AGUA AL EVAPORADOR  
 RT10 SONDA DE TEMPERATURA AMBIENTE O DEL AIRE EXTERIOR  
 RT11-RT12 SONDA DE DESESCARCHE  
 RT31 SONDA DE TEMPERATURA  
 RT81 SENSOR DE TEMPERATURA DEL ECONOMIZADOR  
 RT100 SENSOR DE TEMPERATURA DE LA SALIDA COMUN DE AGUA DEL EVAPORADOR  
 SP90F INTERRUPTOR DE FLUJO DE AGUA DE LA BOMBA DEL EVAPORADOR  
 SP1F PRESOSTATO DE ALTA PRESION  
 ST100 TERMOSTATO DE CONTROL DEL VENTILADOR DEL CUADRO ELCTRICO  
 TC TRANSFORMADOR DEL CIRCUITO DE CONTROL  
 TC90 TRANSFORMADOR DEL BUMBA  
 YV41 VALVULA DE INVERSION DE CICLO  
 YV81-YV82 VALVULA DEL ECONOMIZADOR

SCHEMA SIMPLIFIE  
 SIMPLIFIED WIRING  
 VEREINFACHTES SCHEMA

SEMPLIFICATI COLLEGAMENTI  
 SIMPLIFICADO CABLEDO

TD 070 -> 300



04/05/2017

2

00DCG000258200

A

**RACCORDI EMENTI CONTROLLO CLIENTE**

1	MARCHE / ARRET A DISTANCE
2	2 POINTS DE CONSIGNE
3	LIMITATION DE CAPACITE #1
5	ASSERVISSEMENT CLIENT/DEBIT D'EAU
6	DEMANDE D'EAU CHAUD SANITAIRE (CONTACT)
7	EN FONCTIONNEMENT
8	ALARME / ALERT
13	ETAGE ELECTRIQUE 1/ COMMANDE CHAUDIERE
14	ETAGE ELECTRIQUE 2
15	ETAGE ELECTRIQUE 3
16	ETAGE ELECTRIQUE 4
17	TEMPERATURE RESERVOIR DHW
18	VANNE DISTRIBUTION EAU CHAUDE SANITAIRE

**OPTIONS ET ACCESSOIRES**

UNITE AVEC GAINÉ D'EVACUATION D'AIR  
 BAS NIVEAU SONORE  
 DEMARRAGE A COURANT REDUIT  
 RECHAUFFEUR MODULE HYDRAULIQUE  
 SONDÉ COMMUNE EAU FROIDE (DUPLEX)  
 MODULE HYDRAULIQUE AVEC POMPE SIMPLE BP  
 BUS COMMUNICATION LON OU JBUS  
 BUS COMMUNICATION BACNET  
 AJUSTEMENT CONSIGNE 4-20mA

**COLLEGAMENTI DI CONTROLLO PER CLIENTE**

1	CONTROLLO REMOTO ON/OFF
2	2 SET-POINT
3	LIMITATORE DI CARICO
5	CONTROLLO CLIENTE / FLUSSO D'ACQUA
6	RICHIESTA ACQUA CALDA PER USO DOMESTICO (CONTATTO)
7	UNITA IN FUNZIONE
8	ALLARME ALLERTA
13	RESISTENZA DI RISCALDAMENTO 1/ CALDAIA
14	RESISTENZA DI RISCALDAMENTO 2
15	RESISTENZA DI RISCALDAMENTO 3
16	RESISTENZA DI RISCALDAMENTO 4
17	TEMPERATURA SERBATOIO ACS
18	VALVOLA DEVIATRICE ACQUA CALDA PER USO DOMESTICO

**ACCESSORI ED OPZIONI**

UNIT WITH DISCHARGE AIR DUCTS  
 OPZIONE SILENZIATA  
 AVVIAMENTO A CORRENTE RIDOTTA  
 RISCALDATORE CIRCUITO ACQUA  
 PREDISPOSIZIONE PER DUPLEX  
 MODULO IDRONICO CON POMPA GEMELLARE  
 SCHEDA PER J-BUS  
 AUTOBUS COMUNICAZIONE BACNET  
 ADEGUAMENTO REGISTRA 4-20mA

**CUSTOMER CONTROL CONNECTIONS**

1	REMOTE ON / OFF
2	2 SETPOINTS
3	DEMAND LIMIT #1
5	FLOW SWITCH/ INTERLOCK SWITCH
6	DOMESTIC HOT WATER REQUEST (CONTACT)
7	RUNNING
8	ALARM / ALERT
13	ELECTRICAL HEATER STAGE 1/ BOILER
14	ELECTRICAL HEATER STAGE 2
15	ELECTRICAL HEATER STAGE 3
16	ELECTRICAL HEATER STAGE 4
17	DHW TANK TEMPERATURE
18	DOMESTIC HOT WATER DIVERTING VALVE

**ACCESSORIES AND OPTIONS**

UNIT WITH DISCHARGE AIR DUCTS  
 LOW NOISE  
 SOFT START  
 HYDRONIC MODULE HEATER  
 DUPLEXING  
 HYDRONIC MODULE FIXED SPEED SINGLE PUMP BP  
 BUS LON OR JBUS  
 BUS BACNET  
 ADJUSTMENT SETPOINT 4-20mA

**CONEXIONES DE CONTROL DEL CLIENTE**

1	ON / OFF REMOTO
2	2 PUNTOS DE CONSIGNA
3	LIMITE DE DEMANDA
5	CONTROL CLIENTE / PRODUCCION DE AGUA
6	SOLICITUD DE AGUA CALIENTE DOMSTICA (CONTACTO)
7	EN FUNCIONAMIENTO
8	ALARMA / ALERTA
13	RESISTENCIA DE CALEFACCION 1/ CALDERA
14	RESISTENCIA DE CALEFACCION 2
15	RESISTENCIA DE CALEFACCION 3
16	RESISTENCIA DE CALEFACCION 4
17	TEMPERATURA DEL DEPOSITO DE ACS
18	VALVULA DISTRIBUIDORA DE AGUA CALIENTE DOMSTICA

**ACCESORIOS Y OPCIONES**

UNIT WITH DISCHARGE AIR DUCTS  
 DISPOSITIVO DE ARRANQUE A TENSION REDUCIDA  
 DISPOSITIVO DE ARRANQUE A TENSION REDUCIDA  
 CALENTADOR DEL CIRCUITO DE AGUA DEL AVAPORADOR  
 UNIDAD DUPLEX  
 MODULO HIDRAULICO CON BOMBA VARIABLE  
 TARJETA J-BUS  
 AUTOBUS COMUNICACION BACNET  
 AJUSTE CONSIGNA 4-20mA

**KUNDEN STEUERKLEMMLEISTE**

1	FERNBEDIENUNG EIN / AUS
2	2 SOLLWERTE
3	LEISTUNGS-AUFNAHMEBEGRENZUNG #1
5	SCHALTER DES FLUSS-SWITCH/INTERLOCK
6	BRUCHWARMWASSERANFORDERUNG (KONTAKT)
7	BEDRIJFSMELDING
8	ALARME / ALERT
13	ELEKTROWARME-STADIUM 1/ ANSTEUERUNG BOILER
14	ELEKTROWARME-STADIUM 2
15	ELEKTROWARME-STADIUM 3
16	ELEKTROWARME-STADIUM 4
17	WARMWASSER-DREI-WEGE-VENTIL
18	BRUCHWARMWASSER-ABLEITVENTIL

**ZUBEHÖR UND OPTIONS**

UNIT WITH DISCHARGE AIR DUCTS  
 OPTION LEISE  
 SANFTANLAUFREGLER  
 HEIZUNG IM VERDAMPFER WASSER KREISLAUF  
 GEMEINSAME SONDE KALTES WASSER  
 HYDRAULIKMODUL MIT EINZELPUMPE VARIABLER  
 JBUS - LON  
 BACNET  
 ANPASSUNG NOTIERT 4-20mA

SCHEMA SIMPLIFIE  
 SIMPLIFIED WIRING  
 VEREINFACHTES SCHEMA

SEMPLIFICATI COLLEGAMENTI  
 SIMPLIFICADO CABLEDO

TD 070 -> 300

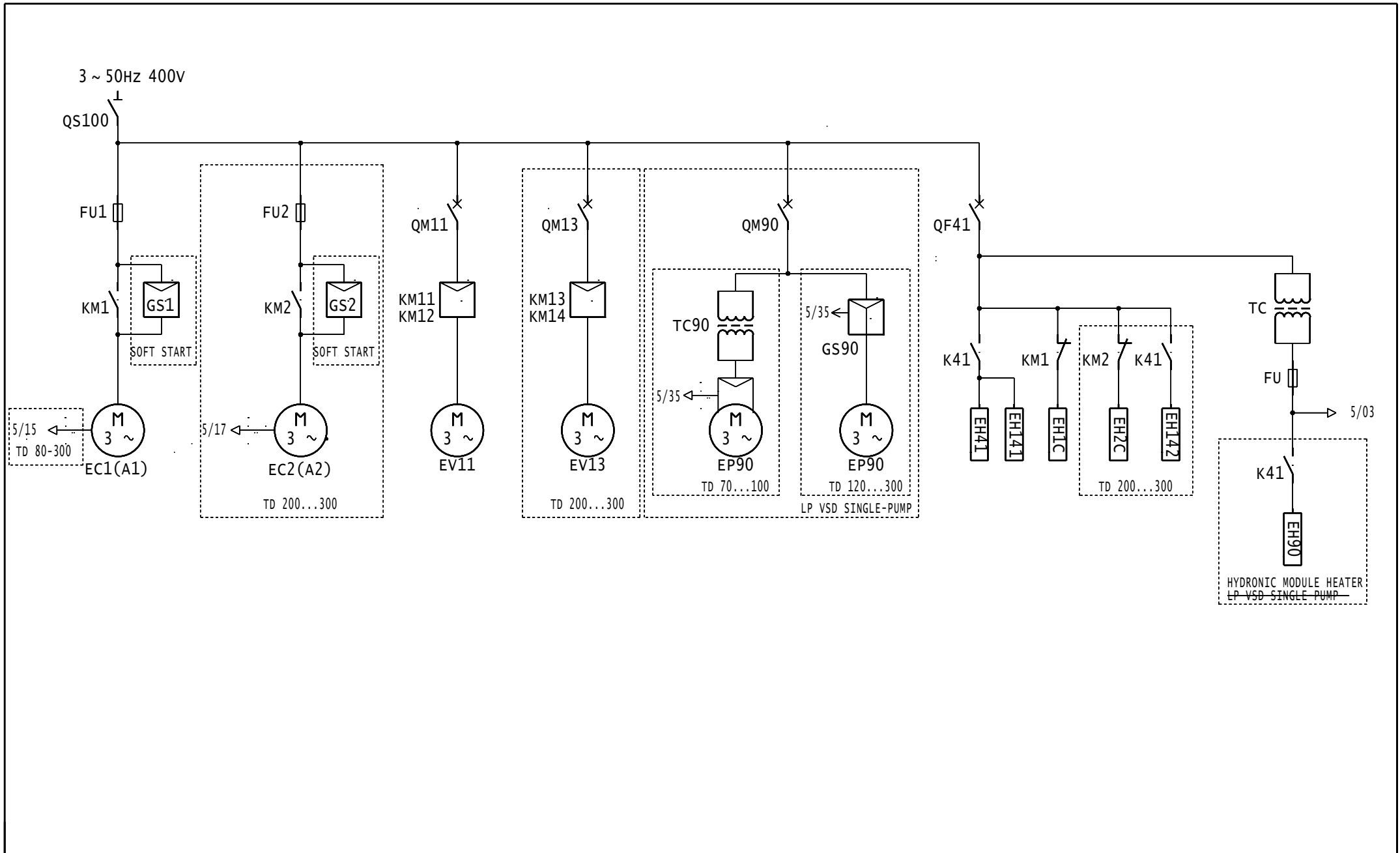


04/05/2017

3

00DCG000258200

A



01	02	03	04	05	06	07	08	09	10	11	12	13	14	15	16	17	18	19	20	21	22	23	24	25	26	27	28	29	30	31	32	33	34	35	36	37	38	39	40
SCHEMA SIMPLIFIE												SEMPLIFICATI COLLEGAMENTI												TD 070 -> 300						04/05/2017		4							
SIMPLIFIED WIRING												SIMPLIFICADO CABLEDO																											
VEREINFACHTES SCHEMA																														00DCG000258200		A							

