



Toshiba Air Conditioning Data Sheet

RAV-GP1401AT8-E
Digital Inverter 6 HP 3 Phase

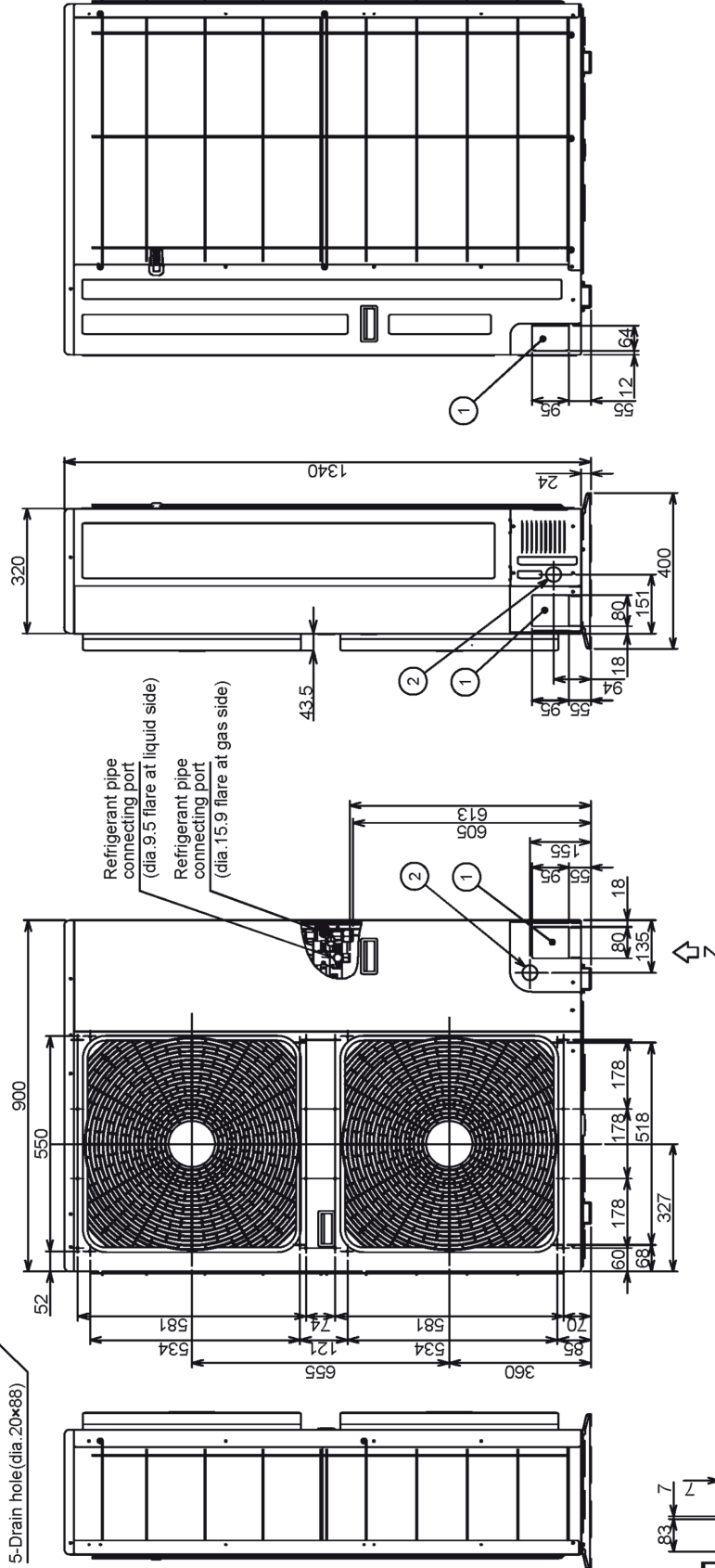
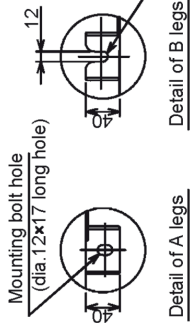
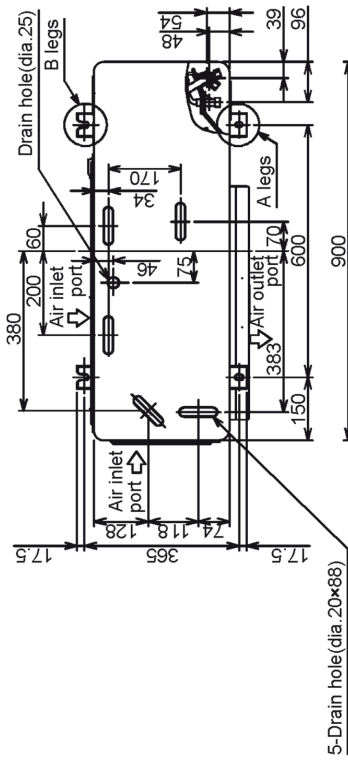
Model Reference	RAV-GP1401AT8-E		
Operating Range	Cooling/Heating	°C	-15 to 46/-20 to 15
Air Flow	High	m ³ /h - l/s	6180 - 1717
Sound	Pressure High Cooling/Heating	dB(A)	51 - 52
	Power High Cooling/Heating	dB(A)	68 - 69
Unit	Height x Width x Depth	mm	1340 x 900 x 320
	Weight	kg	95
Pipe Connection	Flare Connections (gas - liquid)	inch	5/8 - 3/8
	Min.-Max. Length	m	3-75
	Maximum Height Difference	m	±30
	Drain Port Connection	mm	16
Refrigerant R32	Gas - Base Charge/Chargeless Length	kg/m	R32 - 2.6/30
	Additional Charge Liquid Side	g/m	35
Run Current	Maximum	Amps	6.03
Power Cable	Outdoor to Indoor		3 core + earth
Power Supply	Suggested Fuse Size	V/ph/Hz-A	380-415/3/50-16

* Waiting for published data

TOSHIBA

Redesigned for use with refrigerant R32
Wide operating range (cooling mode -15°C to +52°C)
Auto-diagnostic function
Flexible, can be utilised for single, twin, triple indoor applications

	Name	Note
①	Refrigerant piping hole Indoor/Outdoor Unit connecting wire inlet hole	
②	Power supply inlet hole	dia.38 Knockout hole



(Units:mm)