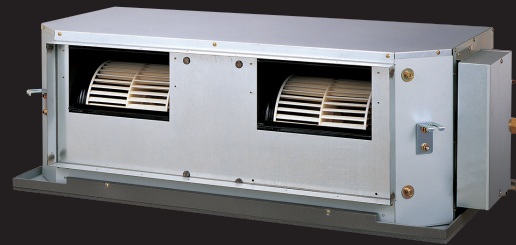


AIR CONDITIONING

High Static Pressure Duct

ARXG45KHTA / AOYG45KBTB
ARXG54KHTA / AOYG54KBTB



Point Easy installation (Compact size & lightweight)

A compact size and lightweight indoor unit & outdoor unit has been developed by reducing the basic chassis and the overall material weight.



Current model

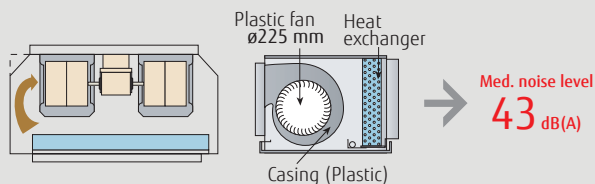


New 45/54 models

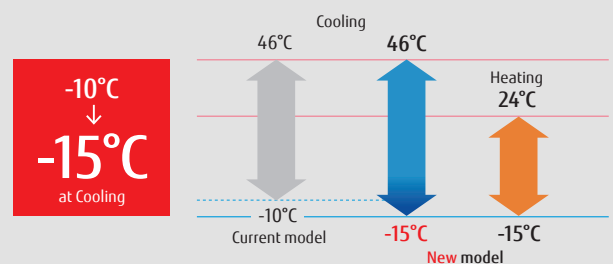
Height
-22.7%

Point Low noise

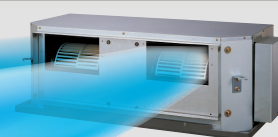
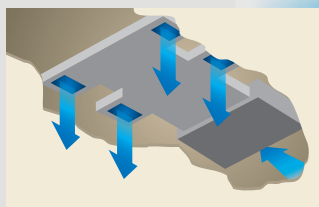
Cutting off the corners has enabled less turbulent airflow. Low noise is realised by adopting a plastic case and a plastic fan.



Point Low ambient operation



Point Design also corresponding to high static pressure



Max.
250 Pa

**Model: ARXG45KHTA / ARXG54KHTA
AOYG45KBTB / AOYG54KBTB**



ARXG45/54KHTA



AOYG45/54KBTB

Optional parts

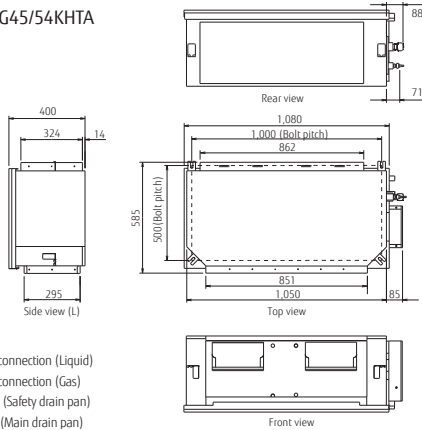
Wired Remote Controller: UTY-RVNYM
Simple Remote Controller: UTY-RSNYM

Wireless LAN Interface: UTY-TFNXZ1
Remote Sensor Unit: UTY-XSZX

Long Life Filter: UTD-LF60KA
External Connect Kit: UTD-ECS5A

Dimensions

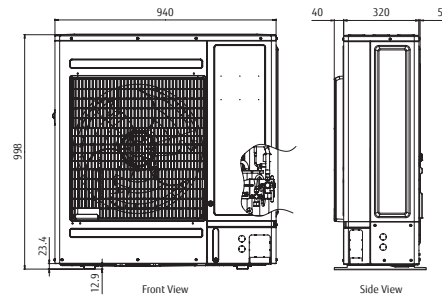
Indoor unit : ARXG45/54KHTA



- ① Refrigerant piping flare connection (Liquid)
- ② Refrigerant piping flare connection (Gas)
- ③ Drain piping connection (Safety drain pan)
- ④ Drain piping connection (Main drain pan)

Outdoor unit : AOYG45/54KBTB

(Unit : mm)



Model No.	Indoor unit		ARXG45KHTA		ARXG54KHTA	
	Outdoor unit		AOYG45KBTB		AOYG54KBTB	
Power Source	Single-phase, ~230V, 50Hz					
Capacity	Cooling	kW	12.1 (4.0-14.0)		13.4 (5.0-14.5)	
	Heating		13.5 (5.0-16.2)		15.5 (5.5-18.0)	
UK Total/sensible cooling			11.54/9.68		12.78/10.60	
Input Power	Cooling/Heating		kW		4.16/3.61	
					4.77/4.18	
EER	Cooling		W/W		2.91	
	Heating				2.81	
COP	Cooling		W/W		3.74	
	Heating				3.71	
Pdesign	Cooling/Heating(-10°C)		kW		-	
SEER	Cooling		W/W		-	
SCOP	Cooling				-	
	Heating				-	
Energy Efficiency Class	Cooling				-	
	Heating				-	
Annual Energy Consumption	Cooling		kWh/a		-	
	Heating				-	
Moisture Removal			l/h		1.5	
Sound Pressure Level	Indoor (Cooling)	H/M/L	47/43/40		47/43/40	
	Indoor (Heating)	H/M/L	47/43/40		47/43/40	
Sound Power Level	Outdoor(Cooling/Heating)	High	57/57		57/59	
	Indoor(Cooling/Heating)	High	75/74		75/74	
Airflow Rate	Indoor / Outdoor (Cooling)	High	3,350/4,450		3,350/4,450	
	Indoor / Outdoor (Heating)	High	3,350/4,450		3,350/4,450	
Static pressure range (Standard)			Pa		100 to 250 (100)	
Net Dimensions H x W x D	Indoor	mm	400x1,050x500		400x1,050x500	
	Outdoor	mm	46 (101)		46 (101)	
Weight	Indoor	kg(lbs)	998x940x320		998x940x320	
	Outdoor	kg(lbs)	67 (148)		67 (148)	
Remote Controller Type (NOT Supplied With Unit)	NO CONTROLLER SUPPLIED WITH THESE UNITS PLEASE ORDER SEPARATELY					
Interconnecting Cable (Suggested cable size 1.5mm)	3 Core + Earth					
Suggested MCB Size			Amp		30	
Max. Operating Current	Cooling/Heating		A		28.5	
Power Supply To	Outdoor					
Connection Pipe Diameter (Gas / Liquid)			Inch		5/8 & 3/8	
Max Pipe Length (Pre-Charge)			m		50 (30)	
Max Height Difference			m		30	
Operation Range	Cooling		°CDB		-15 to 46	
	Heating				-15 to 24	
Refrigerant	Type			R32		
	Charge	g		2700		
	Additional Charge	g/m		40		

*Specifications and design are subject to change without notice for further improvement.
*Actual products' colors may be different from the colors shown in this printed material.

Distributed by :



ISO 9001
Certified number: 01 100 075229
Fujitsu General (Thailand) Co., Ltd.

FUJITSU GENERAL AIR CONDITIONING (UK) LTD

Unit 150 Centennial Park, Centennial Avenue, Elstree, Herts. WD6 3SG

www.fujitsu-general.com/uk

Tel: +44 (0)208 731 3450 Fax: +44 (0)208 731 3451

Copyright© 2018 Fujitsu General Limited. All rights reserved. 3EFNP34-1812E